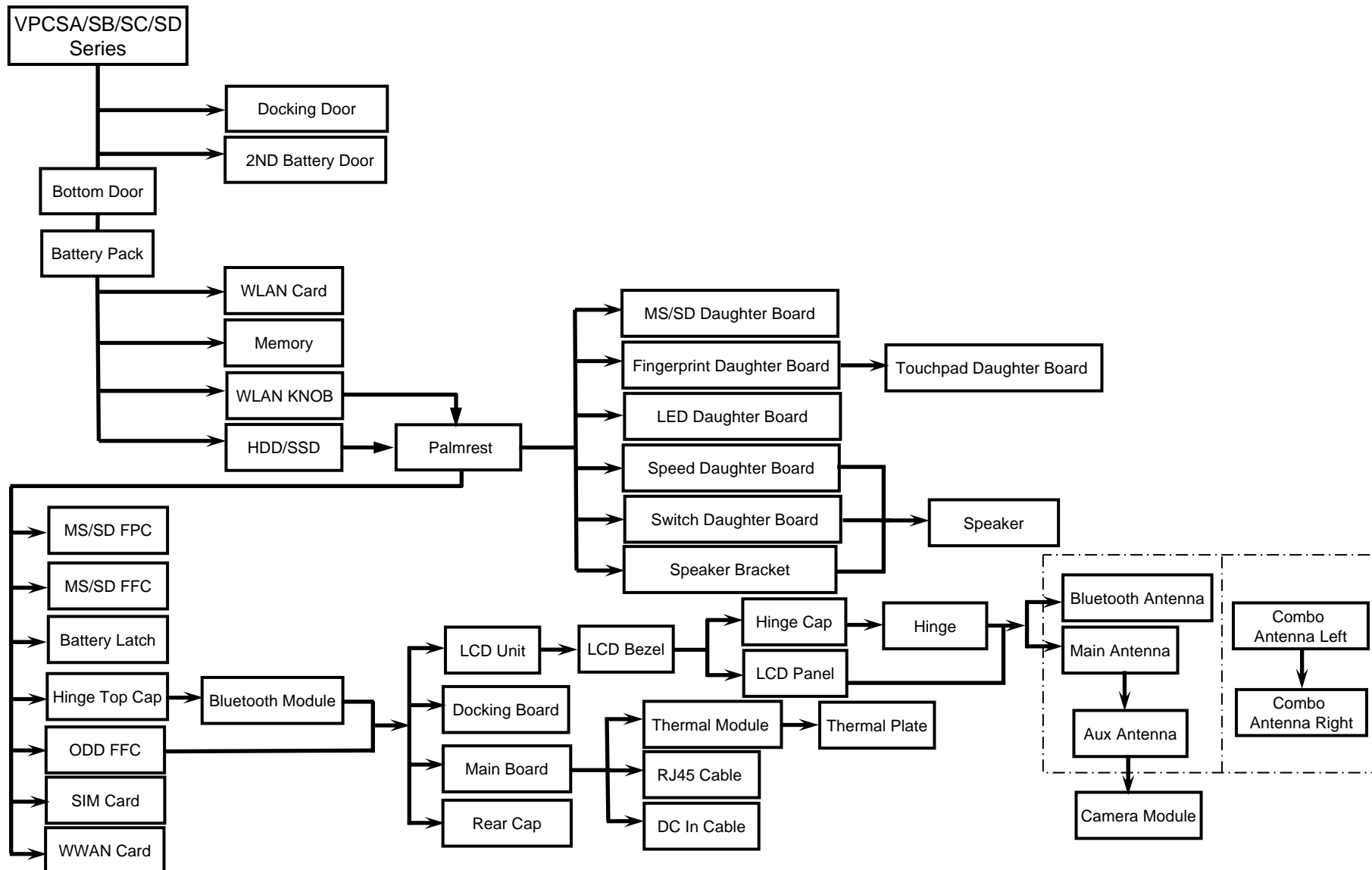
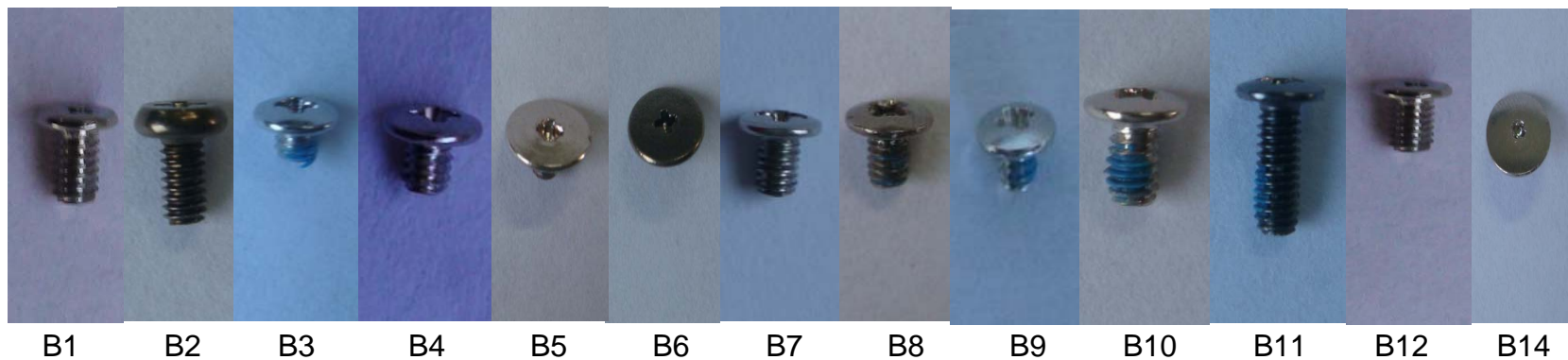

Ver.2.02 2011I

Disassembly & Assembly Guide

Work Flow



Screws



Screw needed for Disassembly

Station	Screw model		Amount
Bottom Door	B8	M2*L3	2
WLAN Card	B4	M2*L2.5	1
SSD/HDD Bracket	B10	M2*L3.5	4
SSD	B2	M1.7*L3.5	4
HDD	B9	M3*L3	4
WLAN KNOB	B5	M2*L2.5	1
ODD	B8	M2*L3	2
ODD TOP COVER	B12	M1.7*L2	3
ODD Bracket	B3	M2*L2	4
Bottom	B2	M1.7*L3.5	2
	B6	M2*L2.5	3
	B10	M2*L3.5	1
	B11	M2*L6	12
Switch Daughter Board	B10	M2*L3.5	1
Speed Daughter Board	B10	M2*L3.5	1
Speaker Bracket	B8	M2*L3	2
Touchpad Daughter Board	B10	M2*L3.5	2
ODD FFC Holder	B2	M1.7*L3.5	1
	B10	M2*L3.5	1
ODD FFC	B10	M2*L3.5	2
Hinge Top Cap	B10	M2*L3.5	2

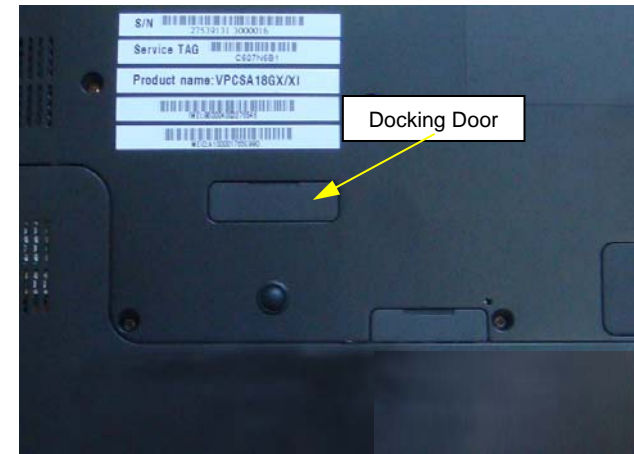
Station	Screw model		Amount
LCD Unit	B10	M2*L3.5	6
Bottom CAP Rear	B2	M1.7*L3.5	1
Battery CON	B11	M2*L6	2
SIM Card	B7	M2*L3	2
SIM Card Door	B5	M2*L2.5	1
WWAN Card	B11	M2*L6	1
Docking Daughter Board (with WWAN Card)	B10	M2*L3.5	1
Docking Daughter Board (without WWAN Card)	B10	M2*L3.5	1
	B11	M2*L6	1
Main Board	B10	M2*L3.5	3
Thermal Module	B11	M2*L6	1
	B10	M2*L3.5	7
Thermal Plate	B8	M2*L3	4
DC IN Bracket	B10	M2*L3.5	1
Battery Latch	B5	M2*L2.5	1
LCD Bezel	B8	M2*L3	2
LCD Panel	B1	M1.7*L3	4
Hinge (For Mild)	B10	M2*L3.5	6
Hinge (For Hot)	B14	M2*L2.5	6

Docking Door, 2ND Battery Door

1)

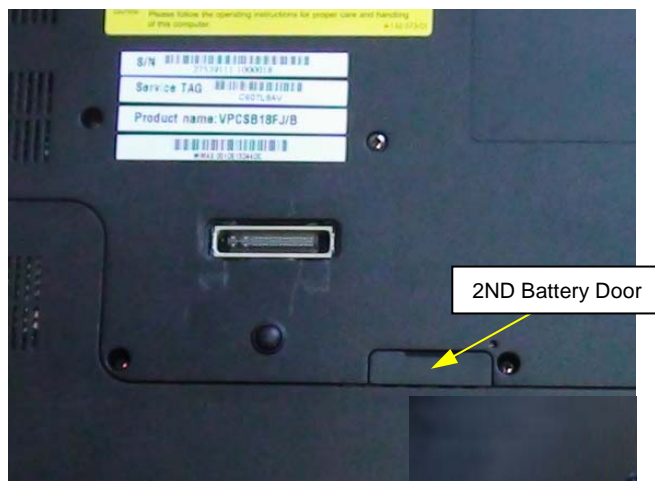


2)



Remove the Docking Door.

3)



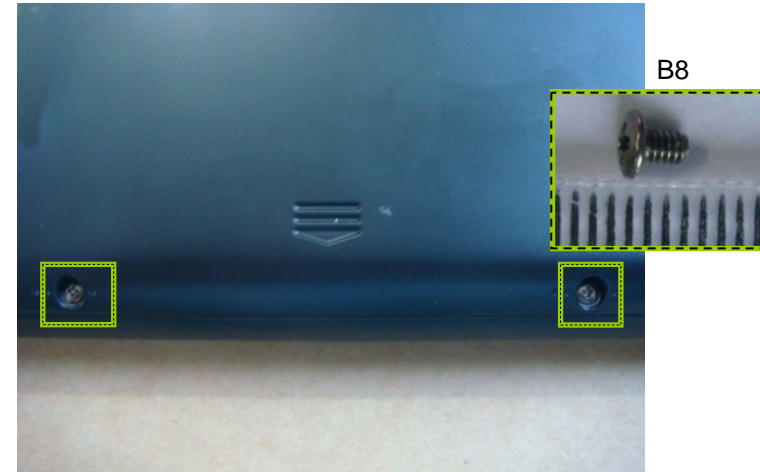
Remove the 2ND Battery Door.

Bottom Door

1)

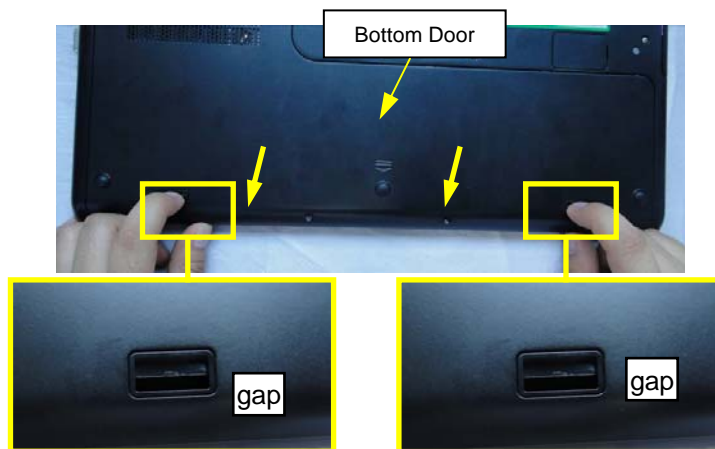


2)



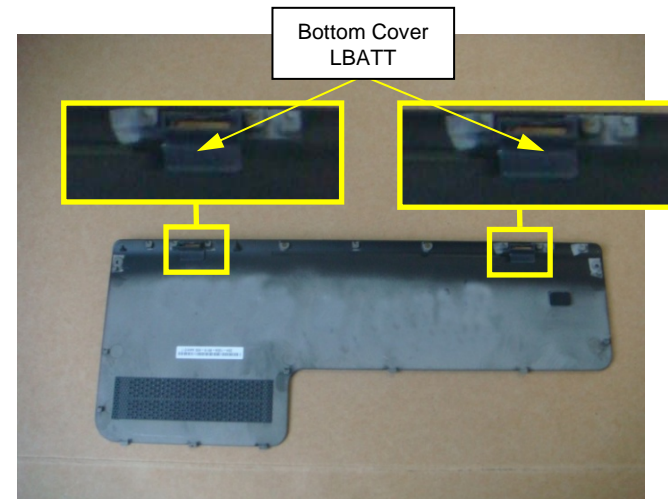
Remove two screws.

3)



Holding the two gaps, push out Bottom Door horizontally to remove.

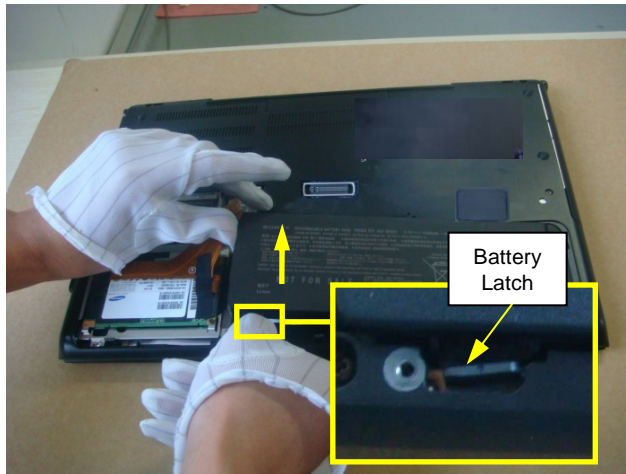
4)



Remove the Bottom Cover LBATT. Note the Cover LBATT fixed Bottom Door with adhesive tapes .

Battery Pack

1)



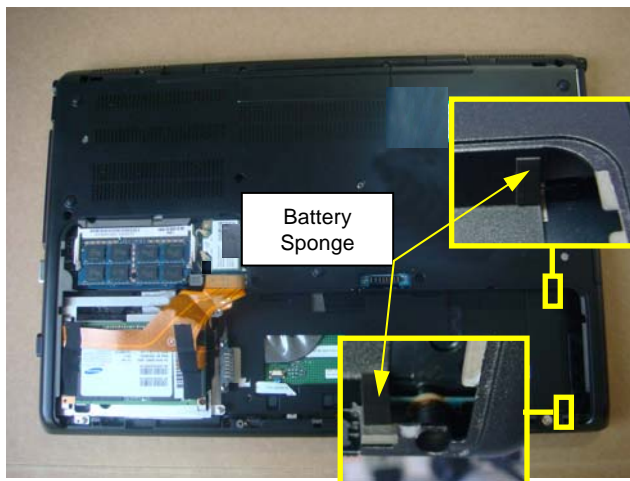
While one finger pressing the Battery Latch, the other hand lift the Battery Pack up.

2)



Pull out the Battery pack in the direction of the arrow.

3)



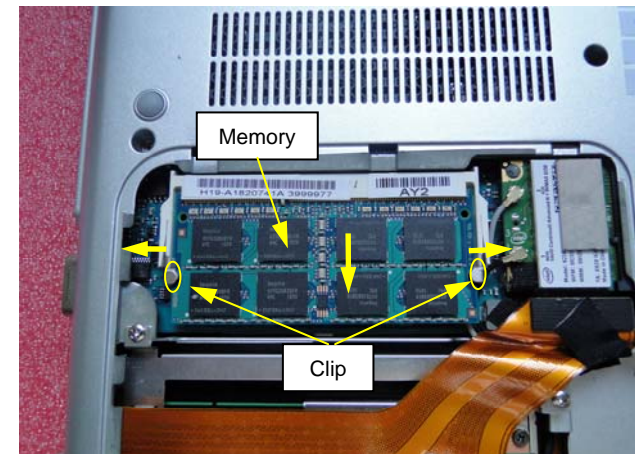
Note the position of the Battery Sponge.

Memory

1)



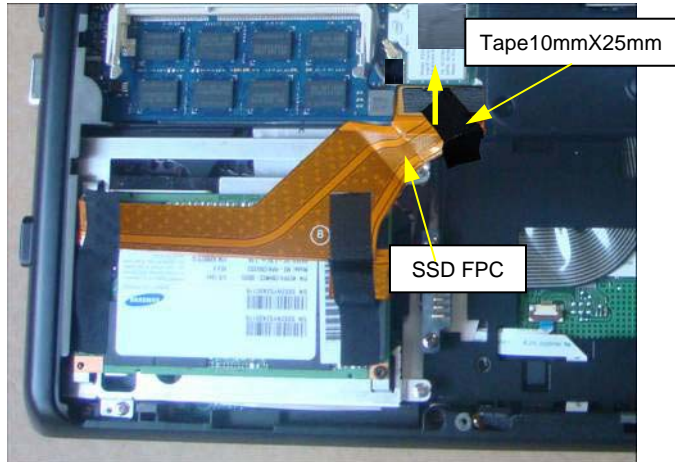
2)



Gently press the clips away from the Memory Module and lift the Memory Module from the system.

SSD (For 2CON SSD) (1)

1)



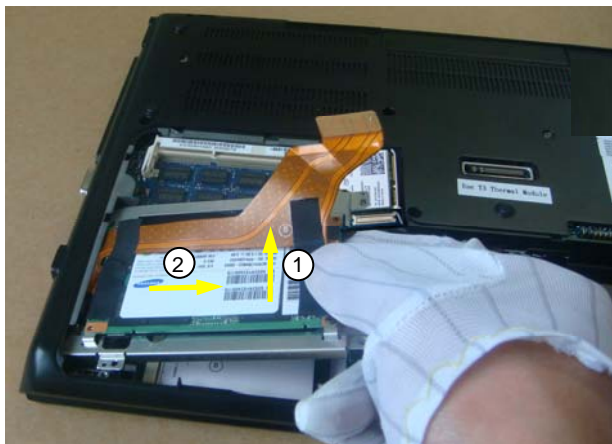
Peel off one Tape. Disconnect the SSD FPC vertically.

2)



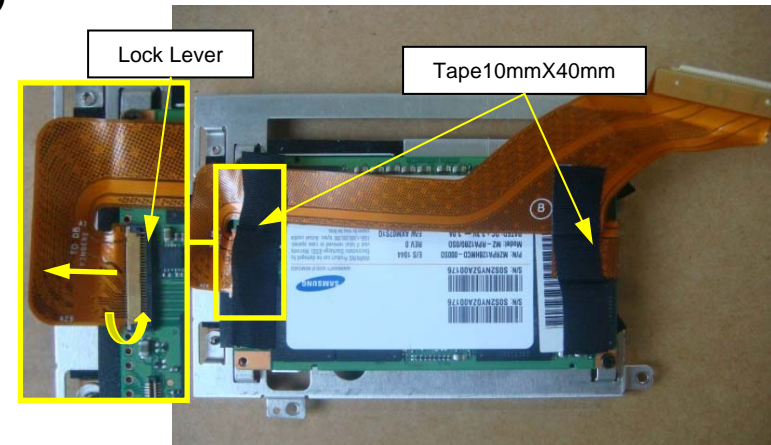
Remove four screws.

3)



Lift up SSD in the direction of arrow 1 and then pull out in the direction of arrow 2.

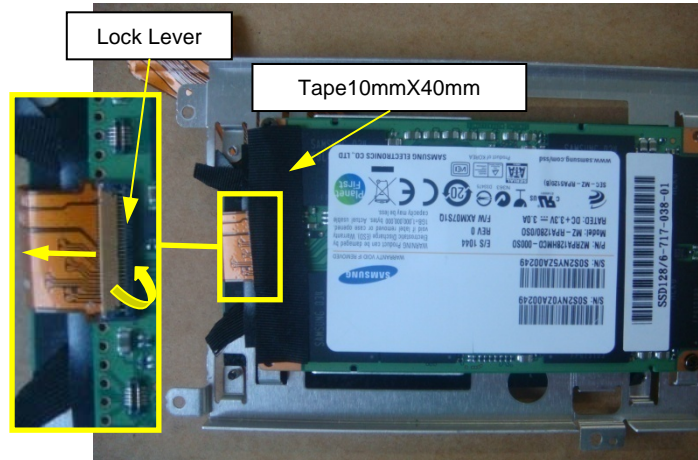
4)



Peel off two Tapes. Raise the lock lever as the arrow. Disconnect one side of SSD FPC from one SSD horizontally.

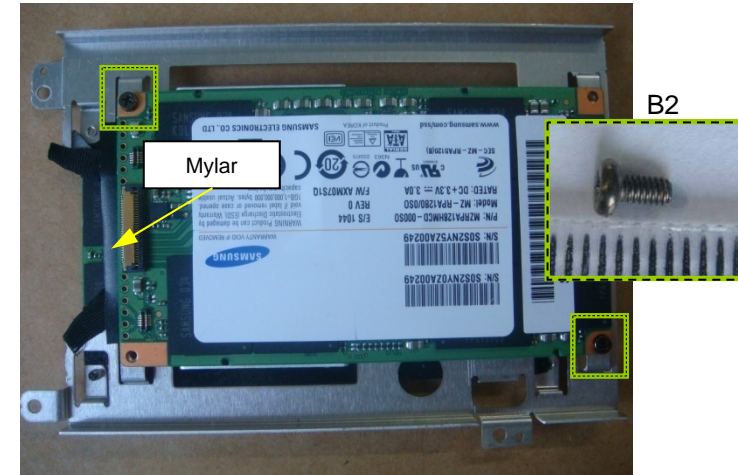
SSD (For 2CON SSD) (2)

5)



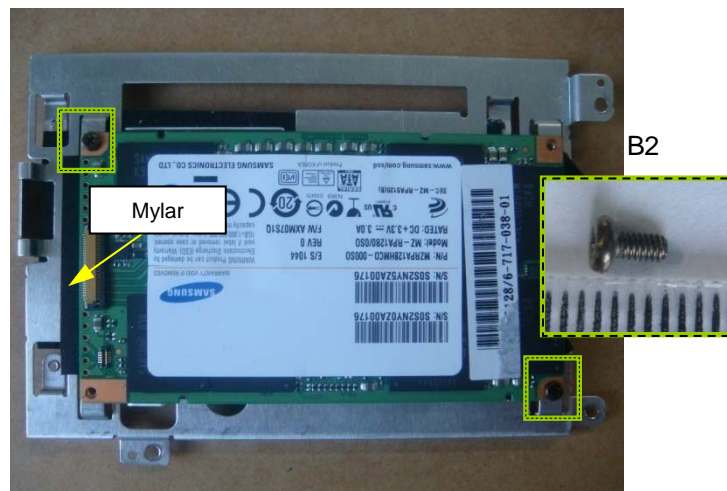
Turn the SSD over . Peel off one Tape.
 Raise the Lock Lever as the arrow. Disconnect the other side
 SSD FPC from the other SSD horizontally and remove the SSD FPC.

6)



Remove two screws and then remove the SSD.

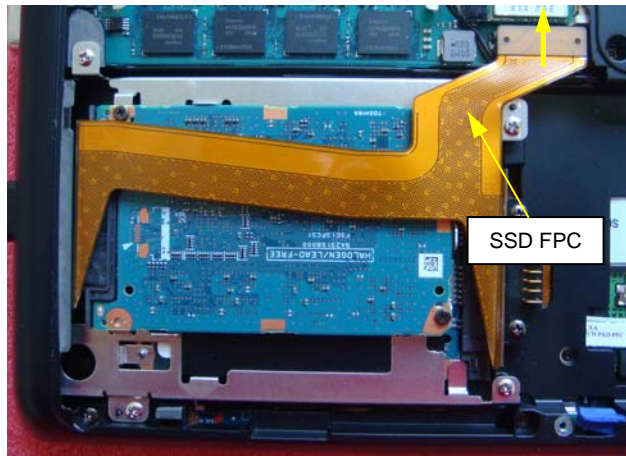
7)



Turn the SSD over. Remove two screws and then remove the other SSD.

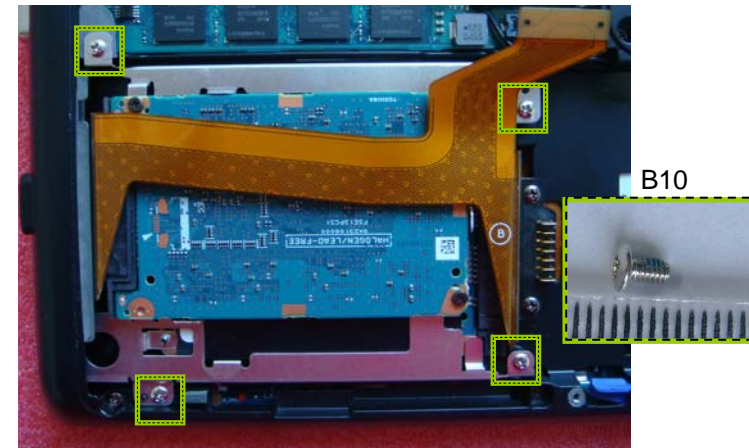
SSD (For SSD SATAx2) (1)

1)



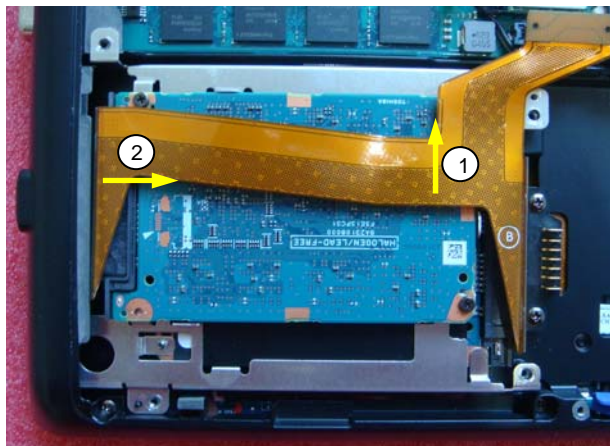
Lift up the SSD FPC from Main board vertically.

2)



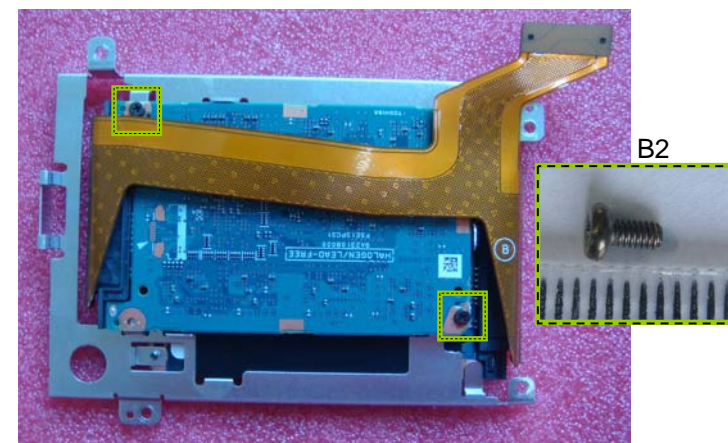
Remove four screws.

3)



Lift up SSD in the direction of arrow 1 and then pull out in the direction of arrow 2.

4)



Remove two screws.

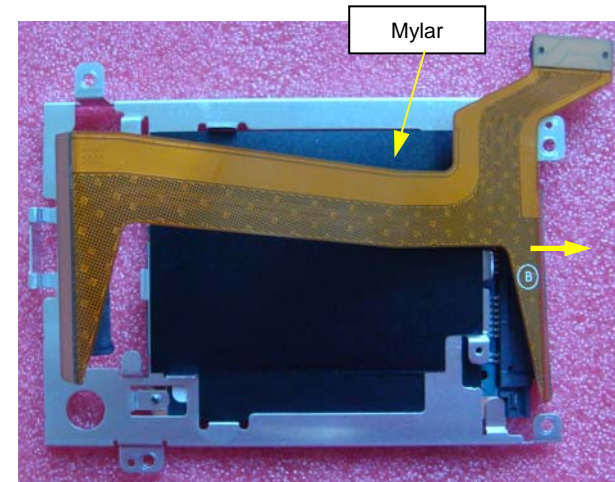
SSD (For SSD SATAx2) (2)

5)



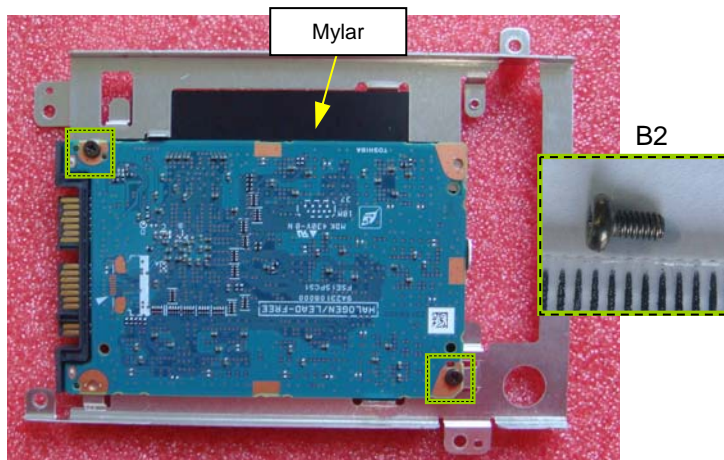
While one hand holding the SSD,
the other hand disconnect SSD FPC from the SSD.

6)



Disconnect the other side of FPC from the other SSD
then remove the SSD FPC.

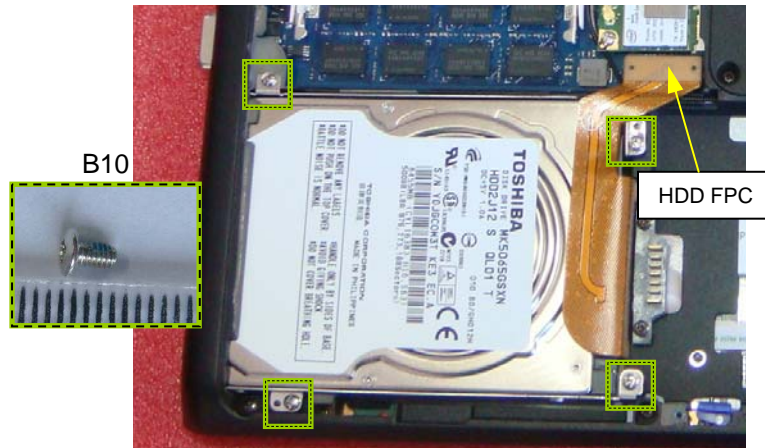
7)



Turn the unit over. Remove two screws and remove the SSD.

HDD

1)



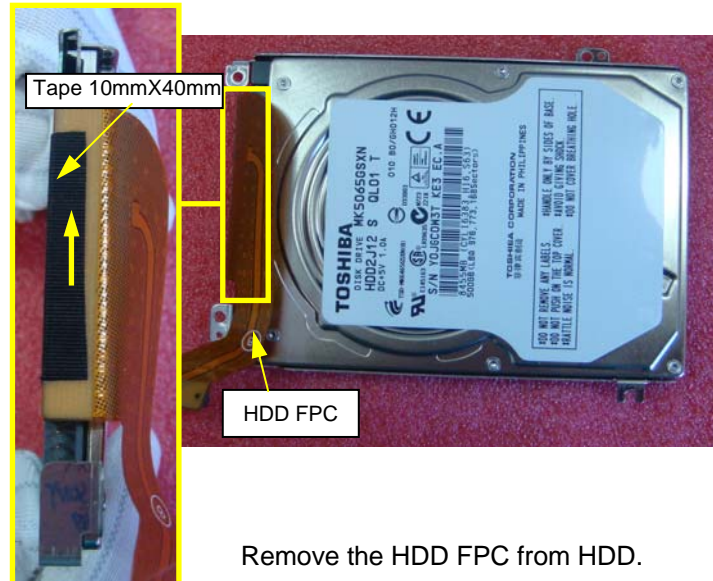
Disconnect the HDD FPC from Main board vertically.
Remove four screws.

2)



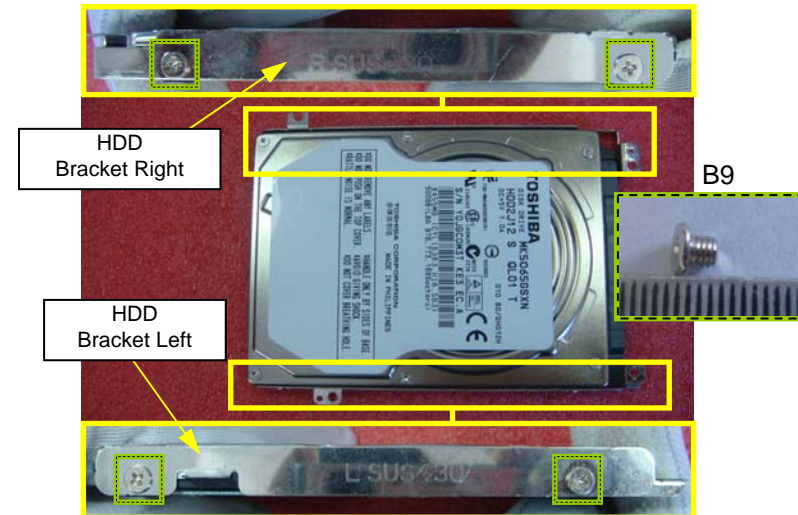
Lift up HDD in the direction of arrow 1 and then pull out it in the direction of arrow 2.

3)



Remove the HDD FPC from HDD.

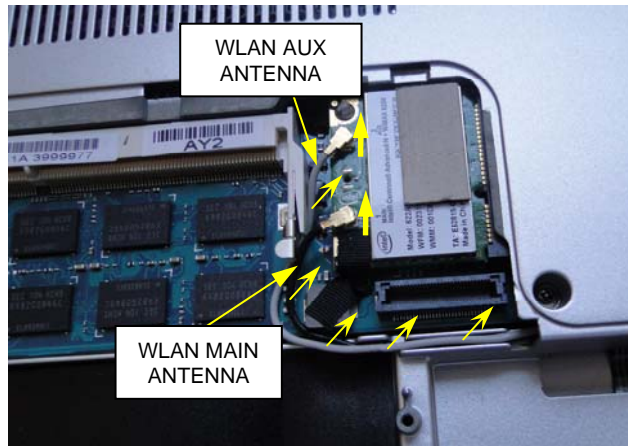
4)



Remove four screws and lift up HDD Bracket Right and Left.

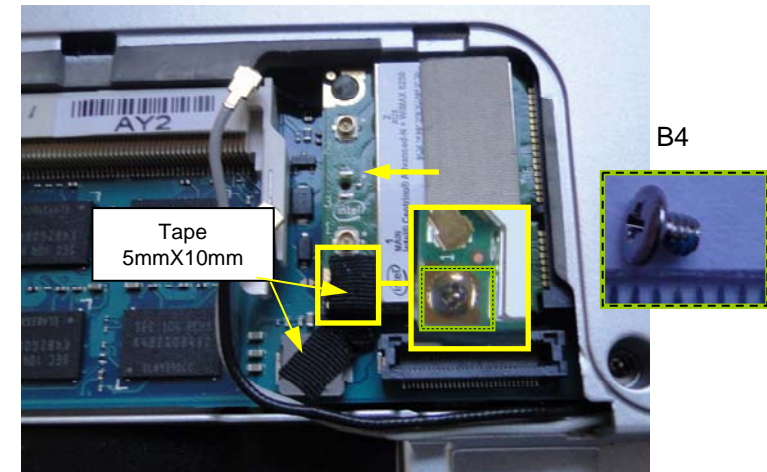
WLAN CARD

1)



Pull out WLAN ANTENNA vertically from WLAN CARD.

2)



Peel off the TAPE. Remove one screw and then remove the WLAN CARD in the direction of arrow.

3)



Remove GASKET 20X10X1T from WLAN CARD.

4)

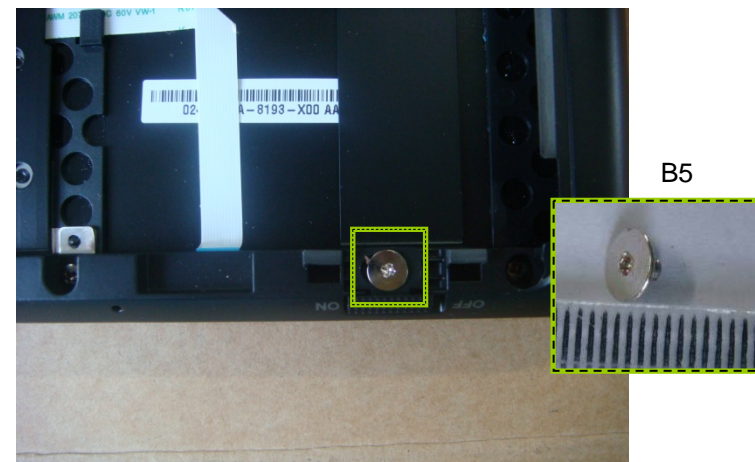


WLAN KNOB

1)



2)



Remove one screw.

3)



Remove the WLAN KNOB.

ODD (1)

1)

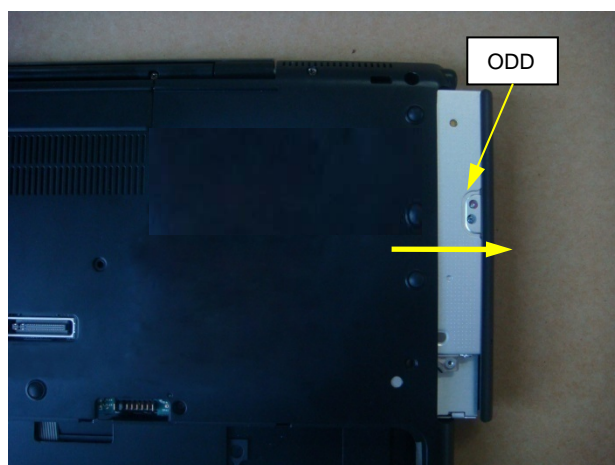


2)



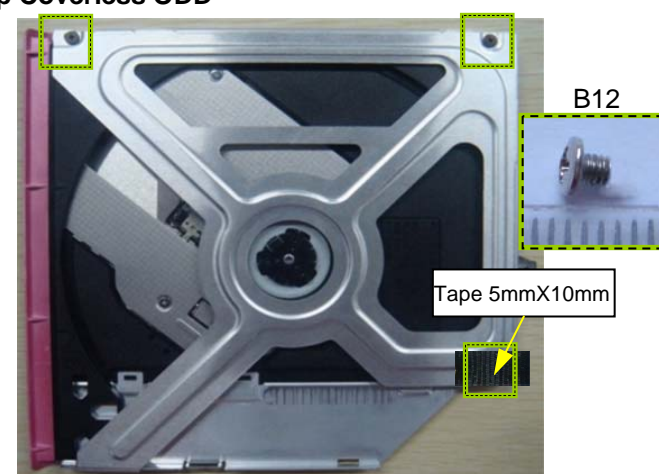
Remove two screws.

3)



Slide the ODD to right and remove it.

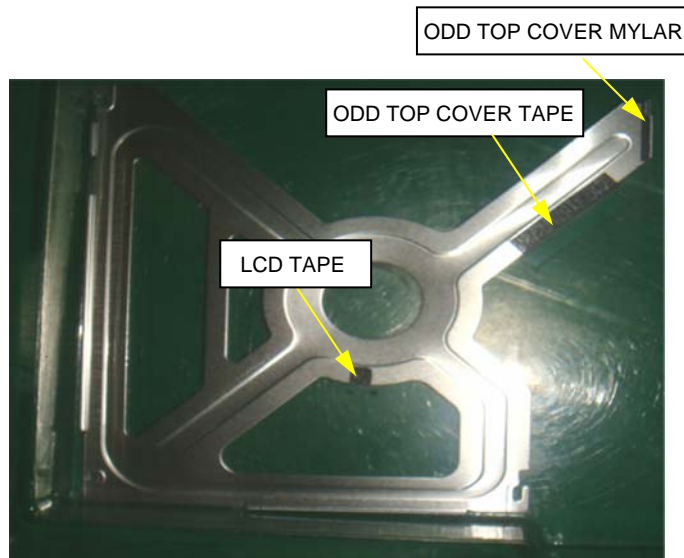
4) With Top Coverless ODD



Remove the Tape. Remove three screws.

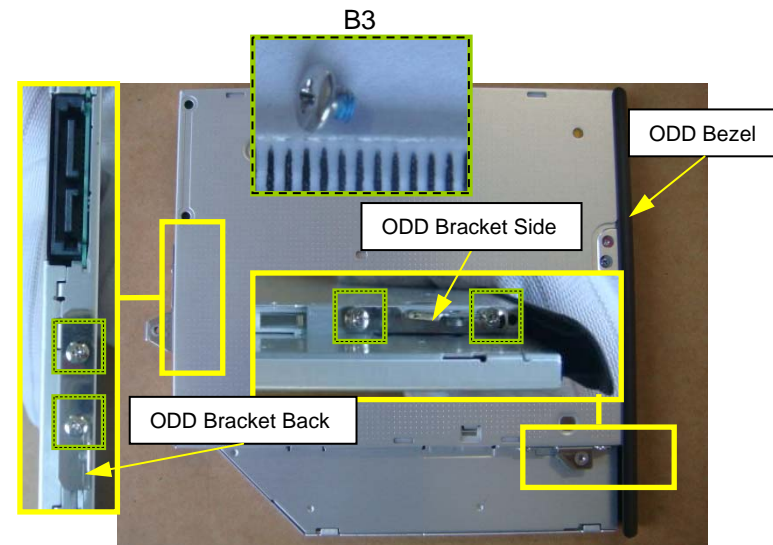
ODD (2)

5) With Top Coverless ODD



Note the position of LCD TAPE, ODD TOP COVER TAPE, ODD TOP COVER MYLAR.

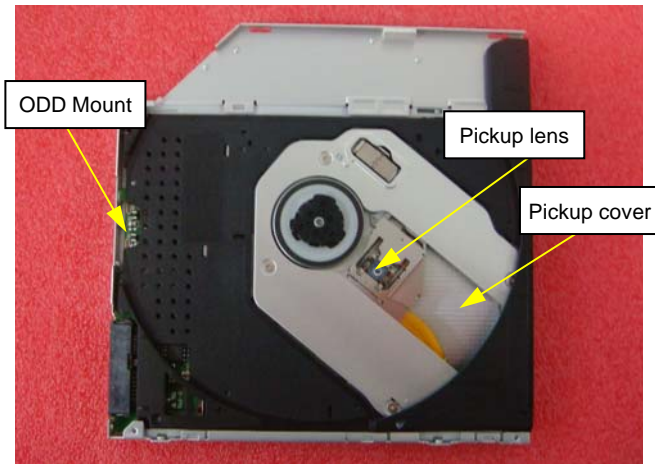
6)



Remove ODD Bezel carefully.
Remove four screws and lift up ODD Bracket Side and Back.

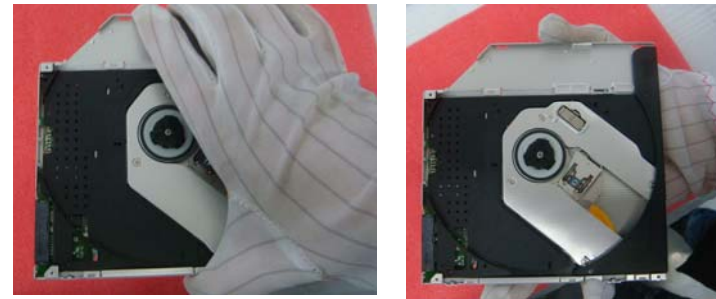
ODD (For Top Coverless ODD)

1)



Don't touch the Pickup lens. Be careful handling of below point: ODD Flame, pickup Cover, ODD Mount and ODD FFC.

2)



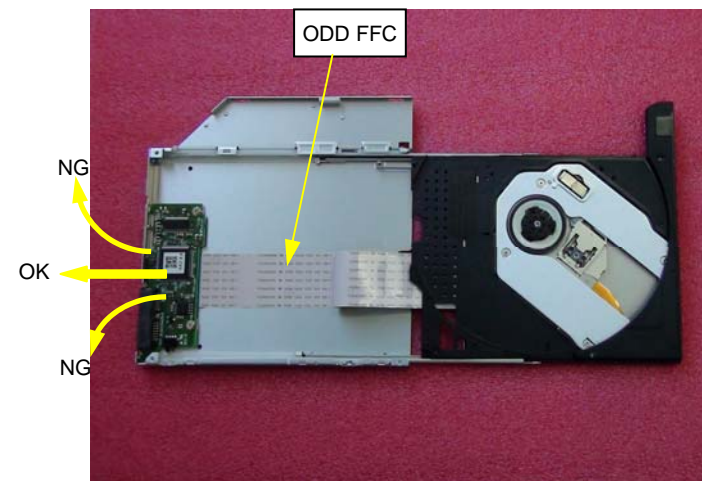
Take the Top Coverless ODD as pictures show.

3)



Take the Top Coverless ODD as picture show.

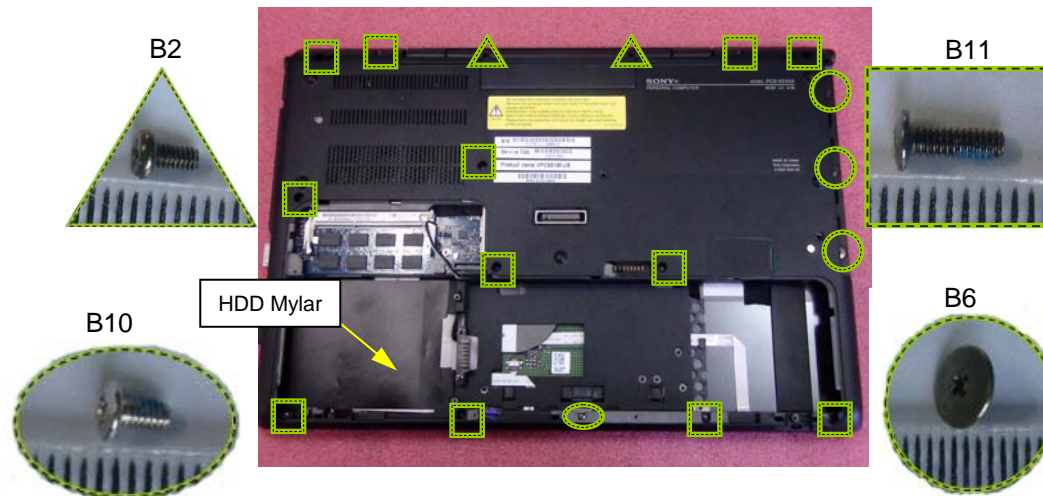
4)



When open the drive tray, pull the center position.

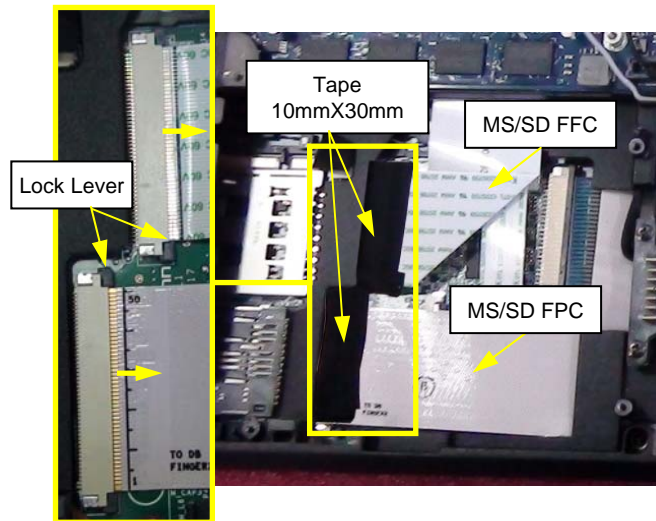
Palmrest (1)

1)



Remove eighteen screws of four kinds. Remove the HDD Mylar.

2)



Peel off two Tapes. Unlock the Lock Lever then disconnect MS/SD FPC and MS/SD FFC horizontally.

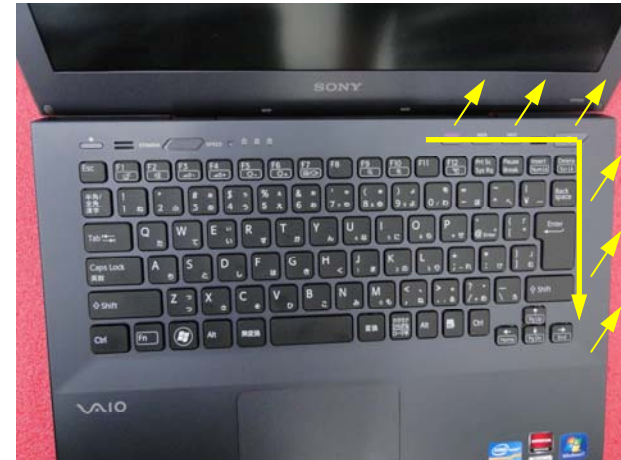
Palmrest (2)

3)



Turn the Unit over. Open the LCD section.
As picture shown, release the top side of Palmrest.
Note release the palmrest carefully.

4)



Release Palmrest in the direction of arrows.

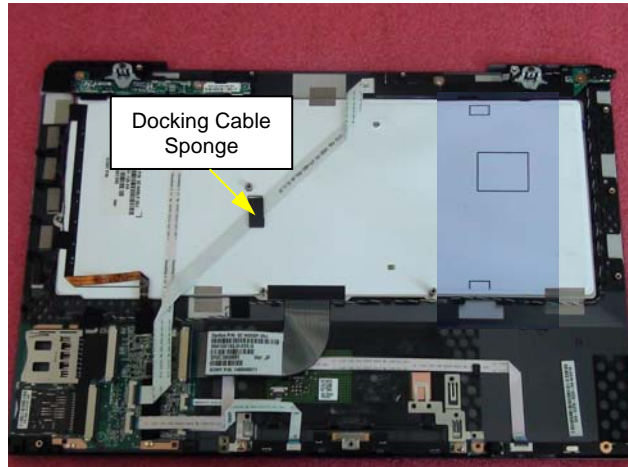
5)



Remove Palmrest in the direction of arrows.

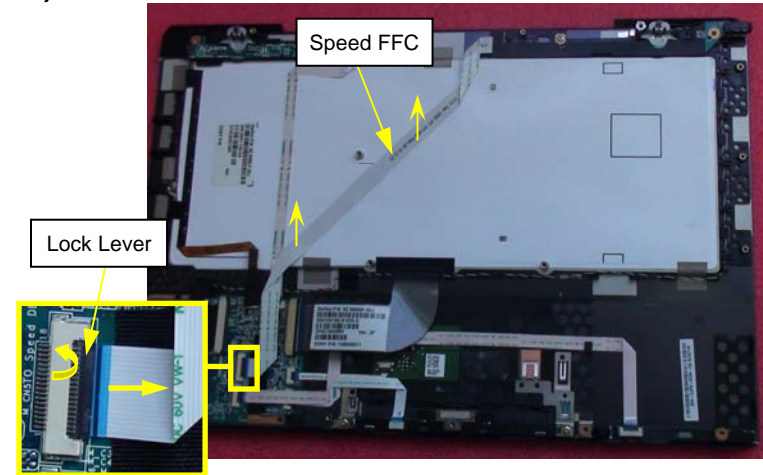
Speed Daughter Board

1)



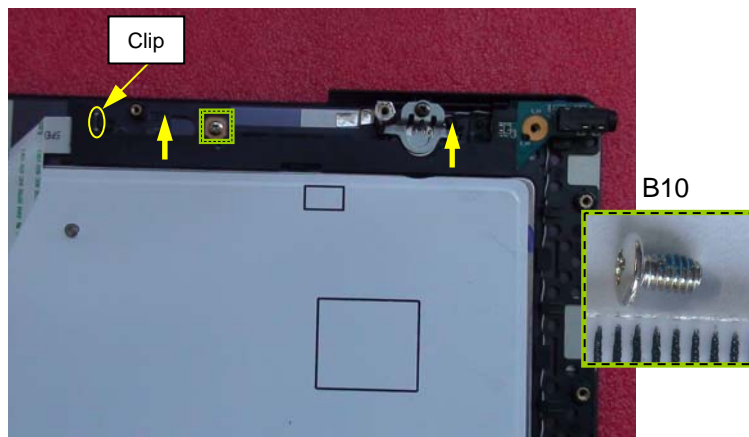
Turn over the Palmrest, remove the Docking Cable Sponge.

2)



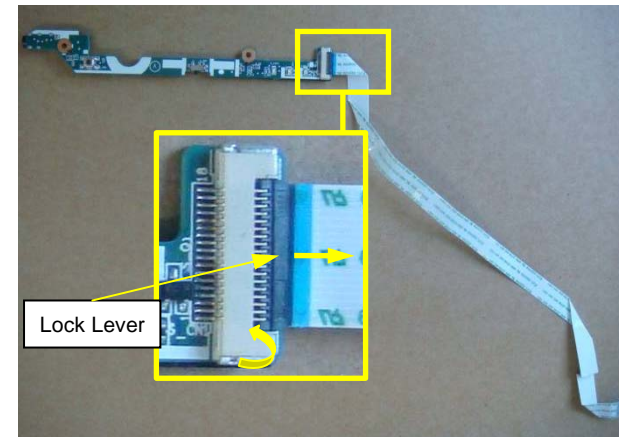
Raise the Lock Lever as the arrow and disconnect Speed FFC from MS/SD Daughter Board. Note Speed FFC is fixed to Palmrest with double tape.

3)



Remove one screw and remove the Speed Daughter Board.

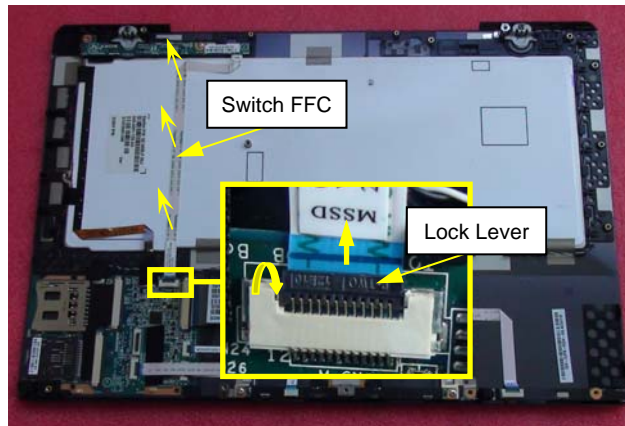
4)



Raise the Lock Lever as the arrow.
Disconnect Speed FFC from Speed Daughter Board.

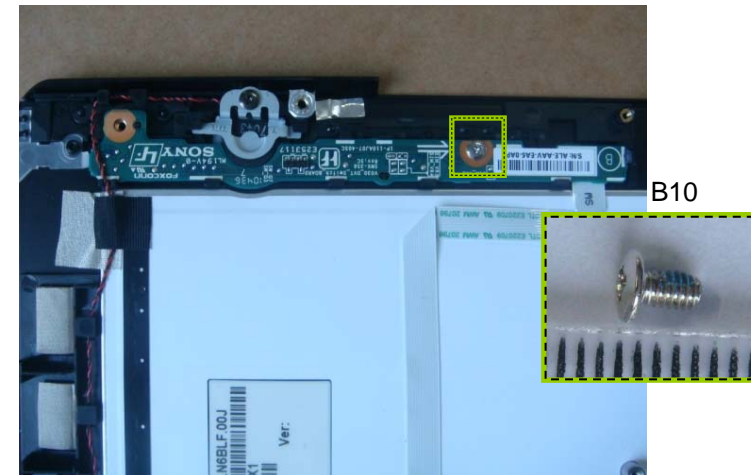
Switch Daughter Board

1)



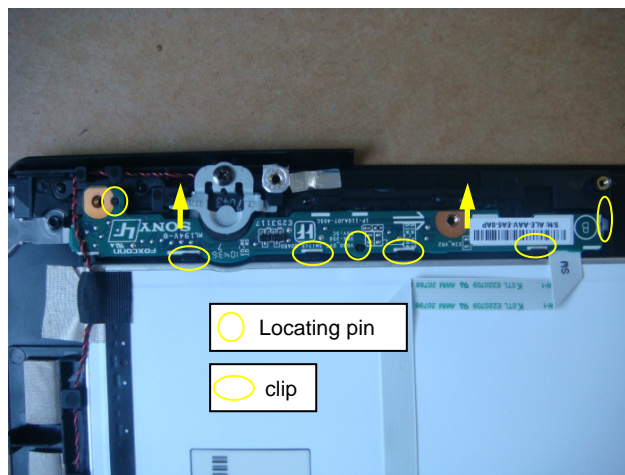
Raise the Lock Lever as the arrow. Disconnect Switch FFC from MS/SD Daughter Board. Note Switch FFC is fixed to Palmrest with double tape.

2)



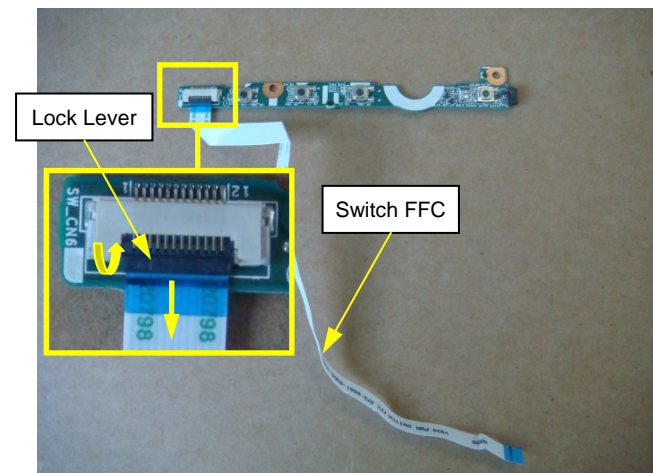
Remove one screw.

3)



Remove Switch Daughter Board. Note five clips and two Locating pin.

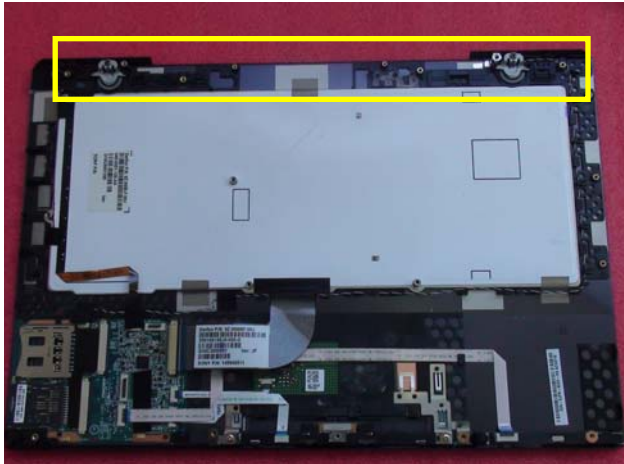
4)



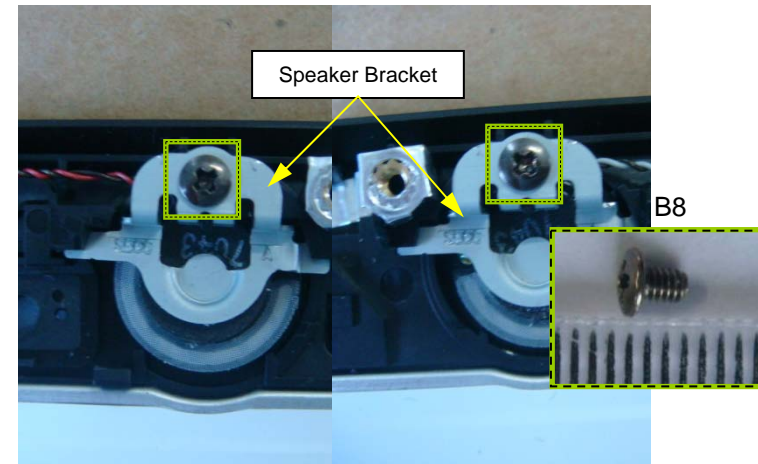
Raise the Lock Lever as the arrow.
Disconnect Switch FFC from Switch Daughter Board.

Speaker L+R (1)

1)

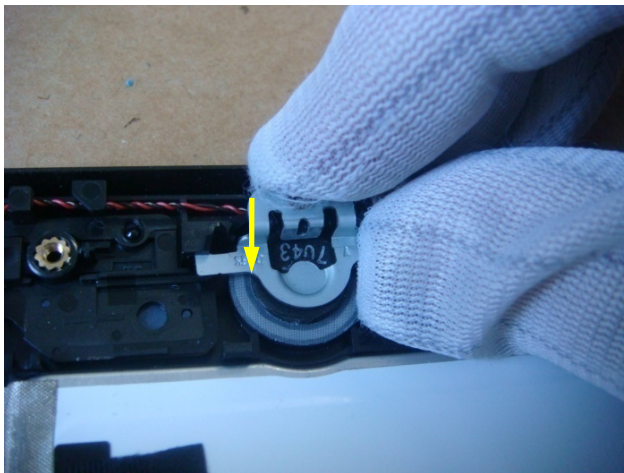


2)



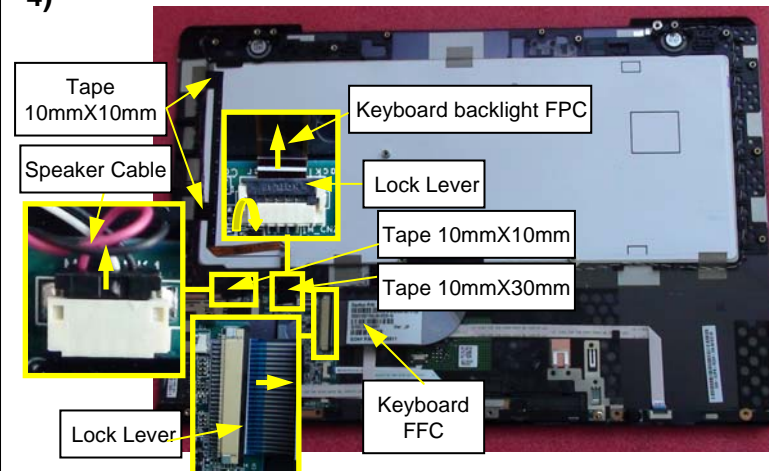
Remove each screw of Speaker Bracket.

3)



Slide each Speaker Bracket in the direction of arrow.

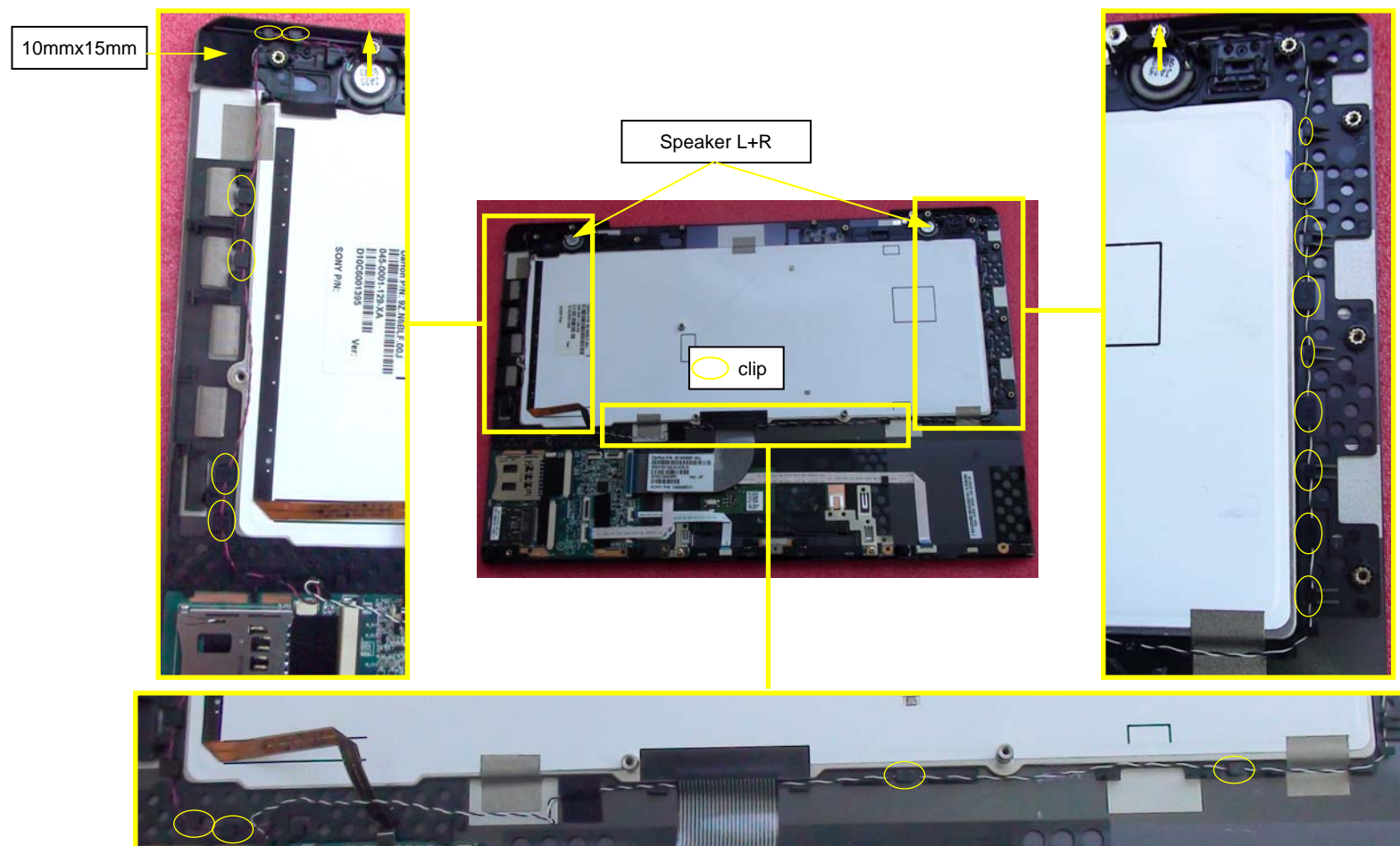
4)



Peel off four Tapes. Disconnect Speaker Cable, Keyboard backlight FPC and Keyboard FFC.

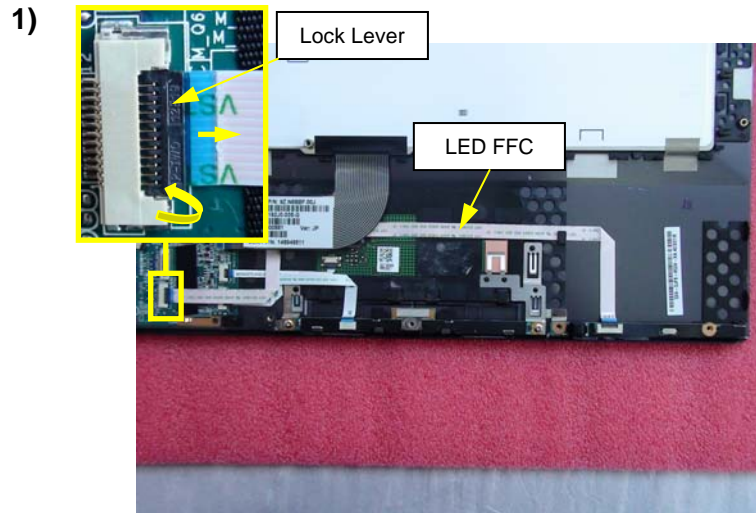
Speaker L+R (2)

5)

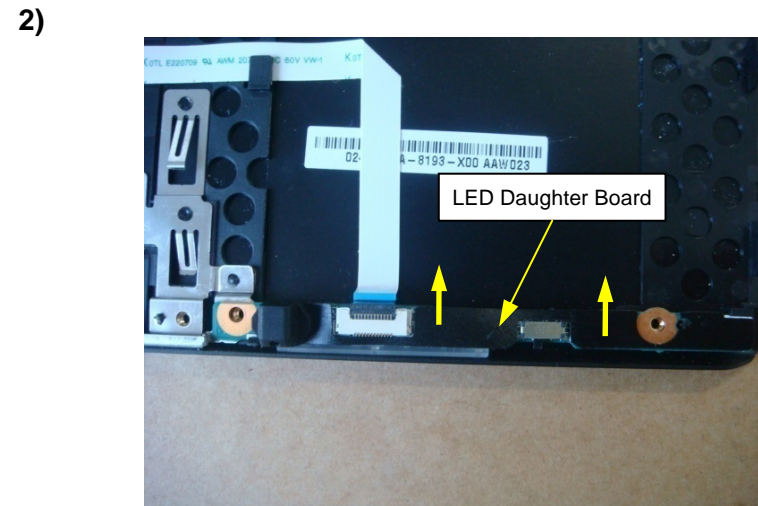


Remove Speaker L+R. Note the cables' route.

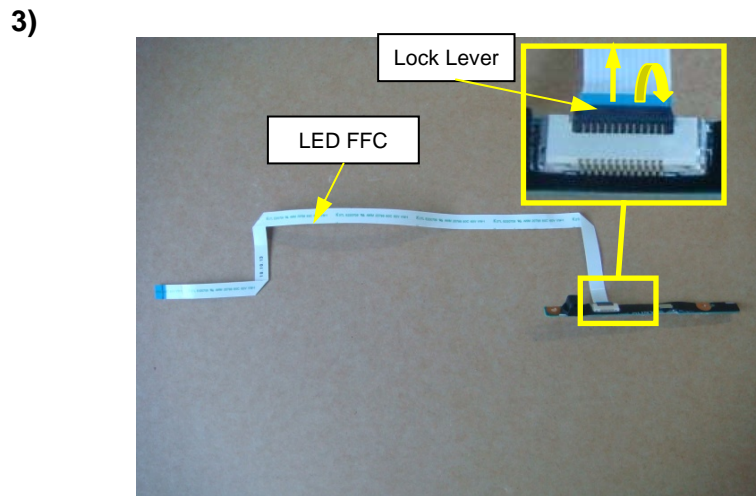
LED Daughter Board



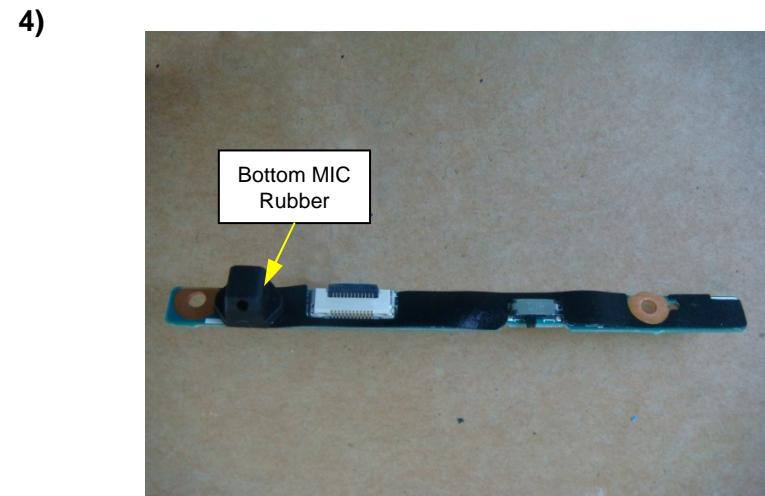
Raise the Lock Lever as the arrow and disconnect LED FFC from MS/SD Daughter Board.



Remove LED Daughter Board.



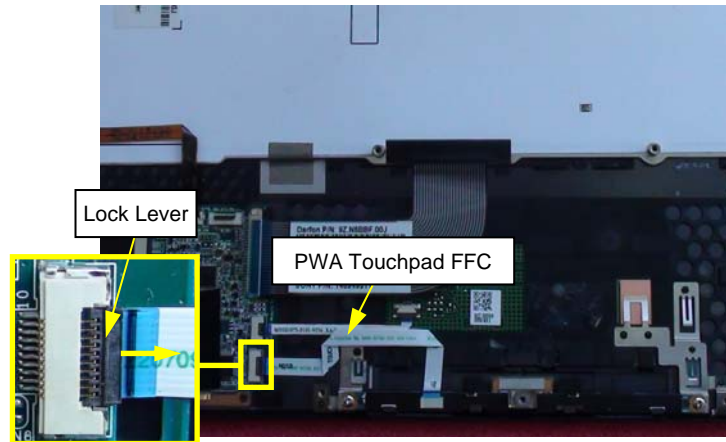
Raise the Lock Lever as the arrow.
Disconnect LED FFC from LED Daughter Board.



Remove Bottom MIC Rubber from LED Daughter Board.

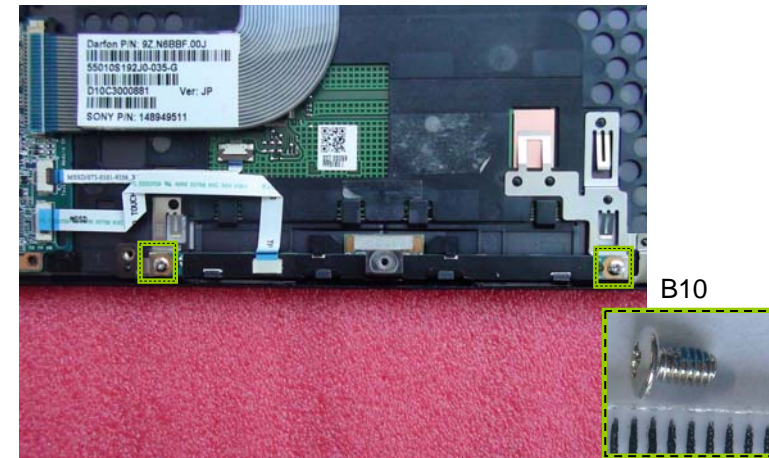
Touchpad Daughter Board, Fingerprint Daughter Board (1)

1)



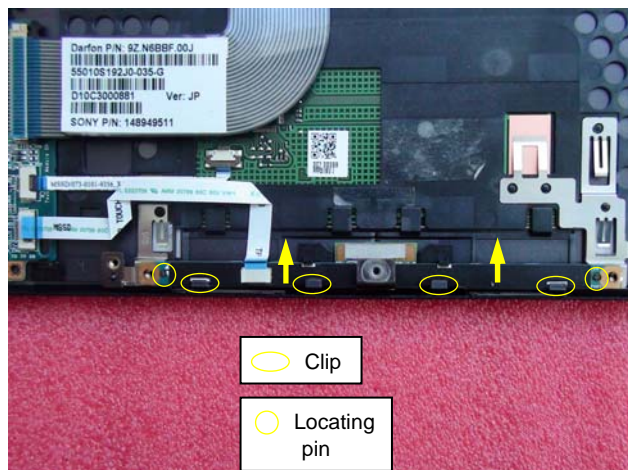
Raise the Lock Lever as the arrow.
Disconnect PWA Touchpad FFC from MS/SD Daughter Board.

2)



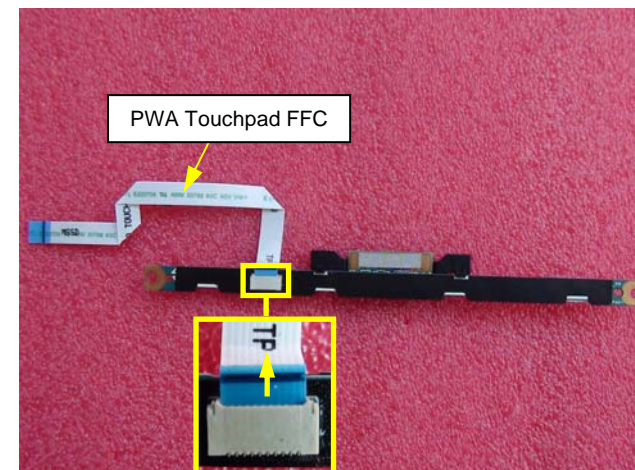
Remove two screws.

3)



Remove the Touchpad Daughter Board. Note the Clips and Locating pins.

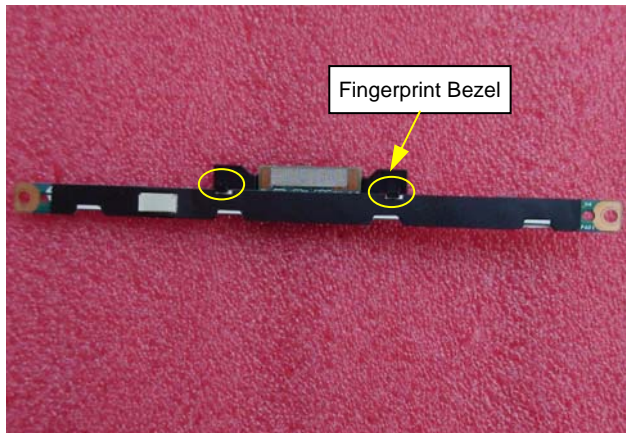
4)



Disconnect the PWA Touchpad FFC
from Touchpad Daughter Board horizontally.

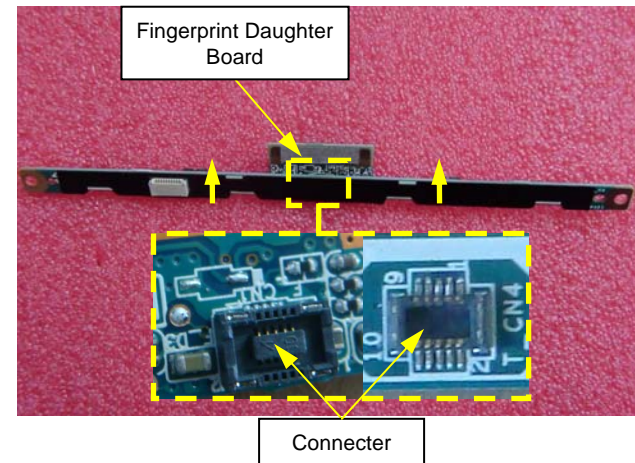
Touchpad Daughter Board, Fingerprint Daughter Board (2)

1)



Release two clips and then remove the Fingerprint Bezel. Note the Fingerprint Bezel fixed Fingerprint Daughter Board with TAPE 5X3.

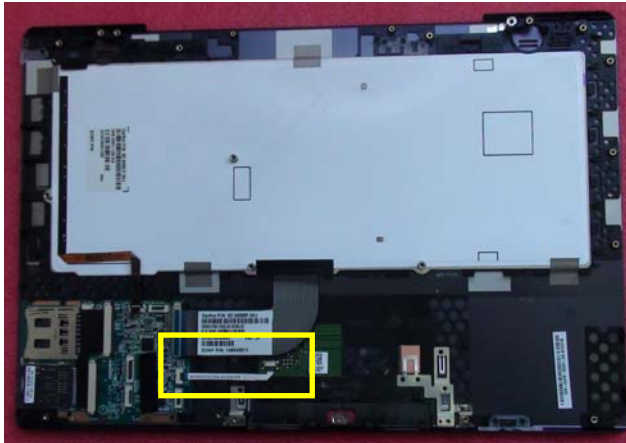
2)



Disconnect the Touchpad Daughter Board from Fingerprint Daughter Board.

Touchpad FFC

1)



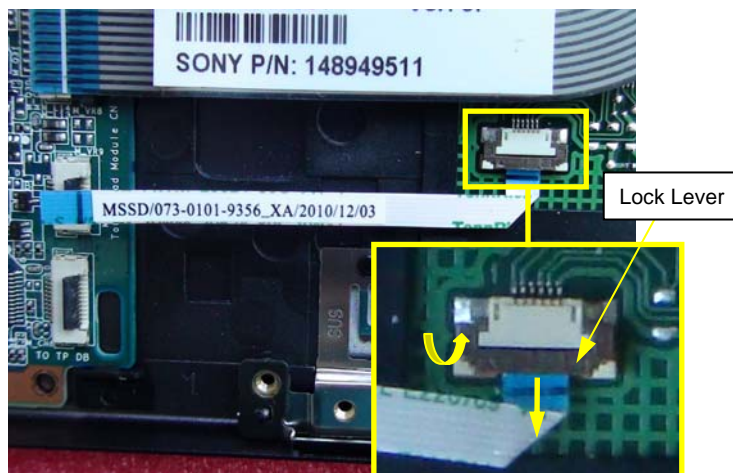
2)



Raise the Lock Lever as the arrow.

Disconnect Touchpad FFC from MS/SD Daughter Board.

3)

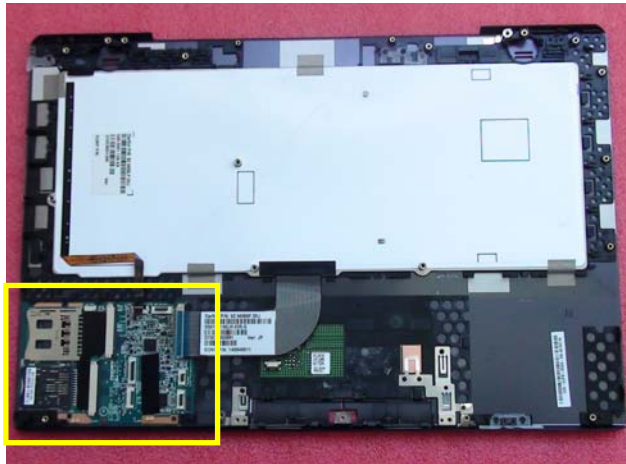


Raise the Lock Lever as the arrow.

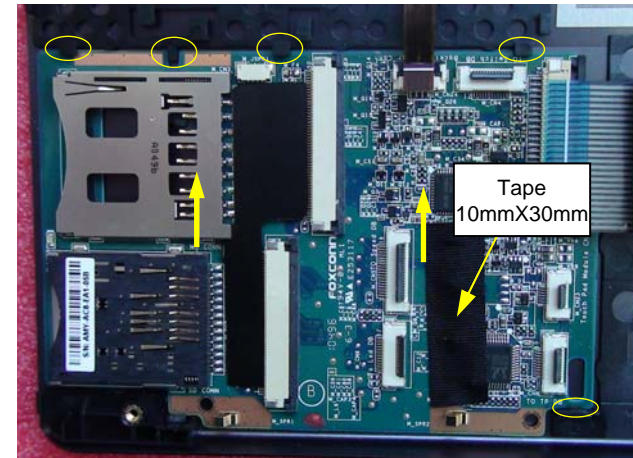
Disconnect Touchpad FFC from Touchpad.

MS/SD Daughter Board

1)



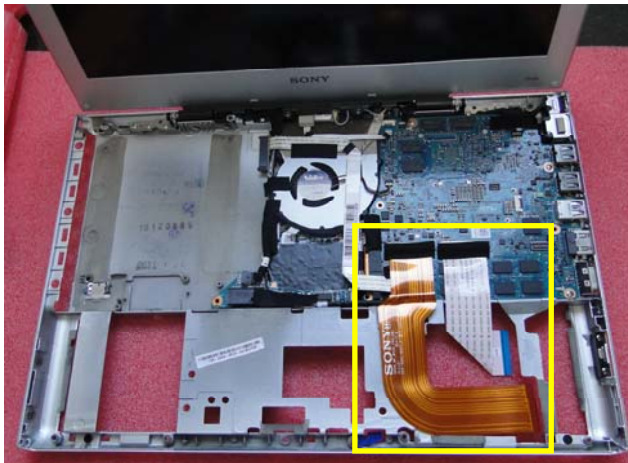
2)



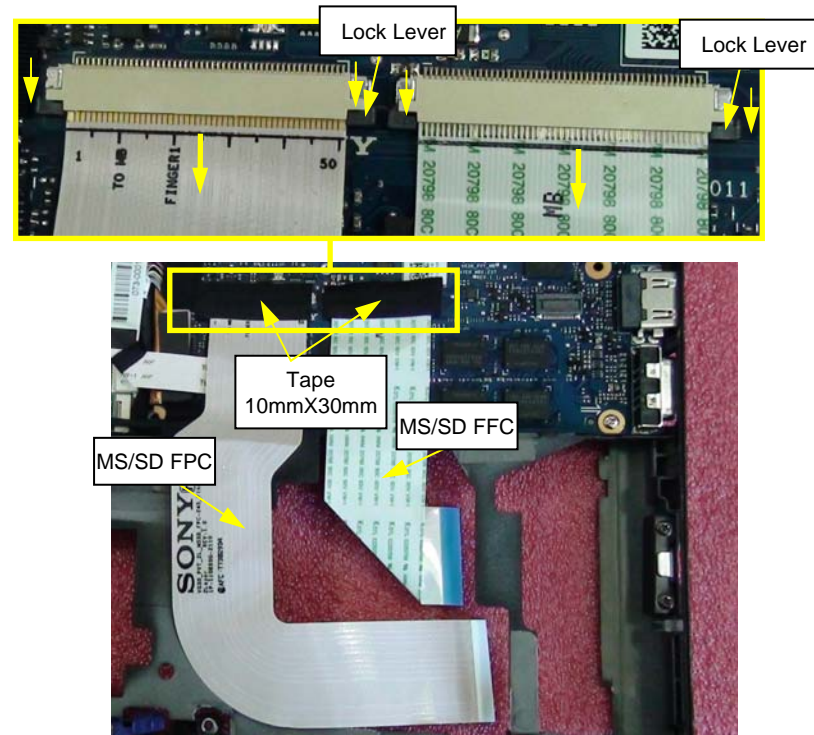
Remove the MS/SD Daughter Board from Palmrest.
Note the clips.

MS/SD FFC,MS/SD FPC

1)



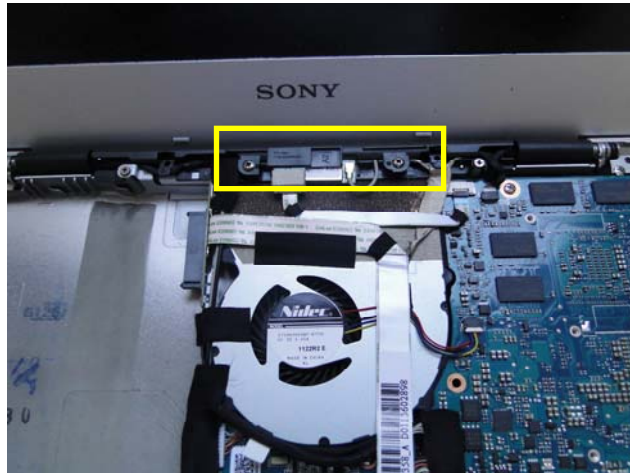
2)



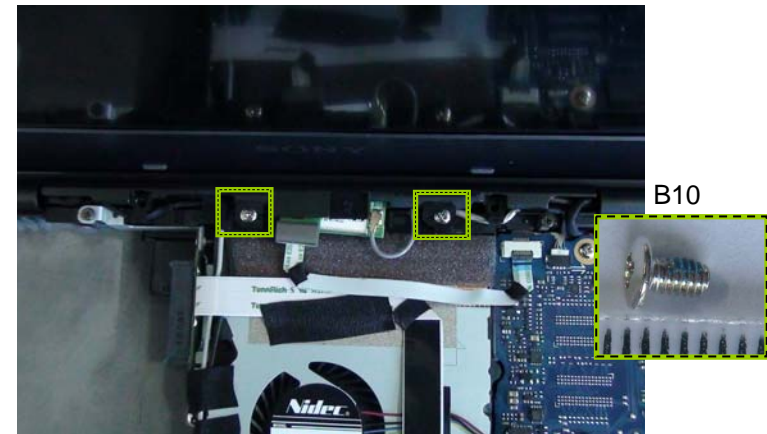
Peel off two tapes. Unlock the Lock Lever, then disconnect MS/SD FFC MS/SD FPC from Main Board horizontally.

Hinge Top Cap

1)

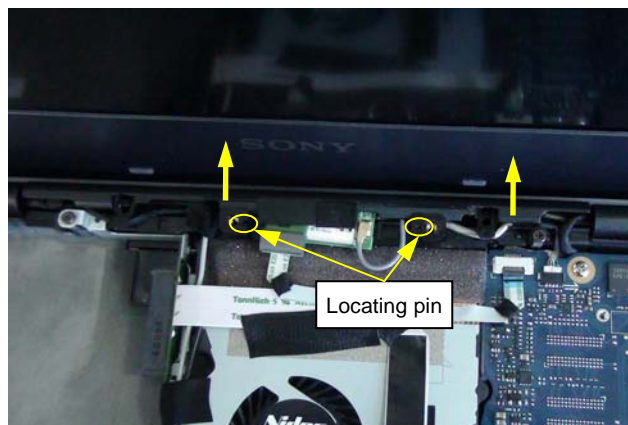


2)



Remove two screws.

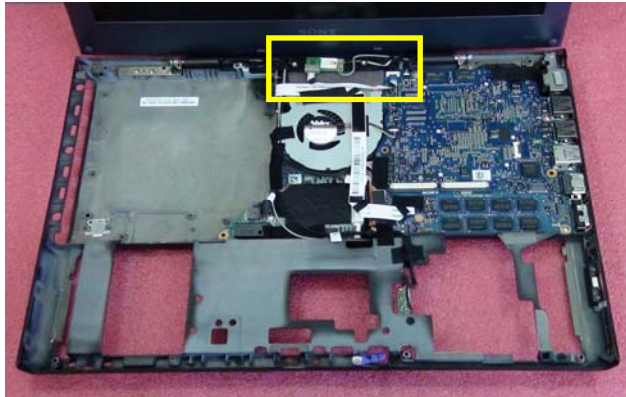
3)



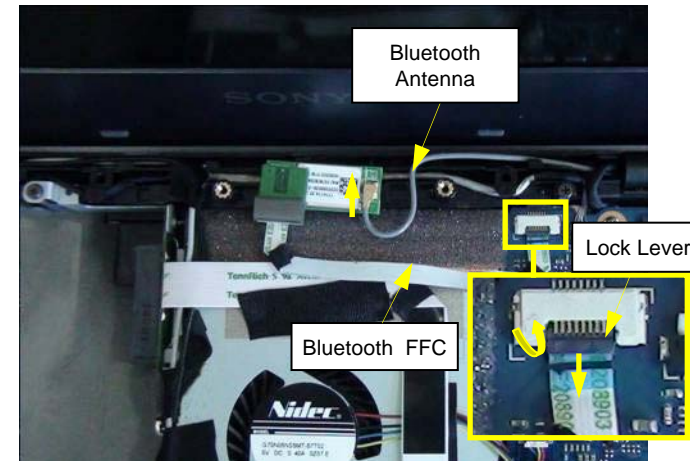
Lift up Hinge Top Cap. Note two Locating pins.

Bluetooth Module

1)



2)



Raise the lock lever as the arrow, disconnect Bluetooth FFC from Main Board. Pull out the Bluetooth Antenna vertically.

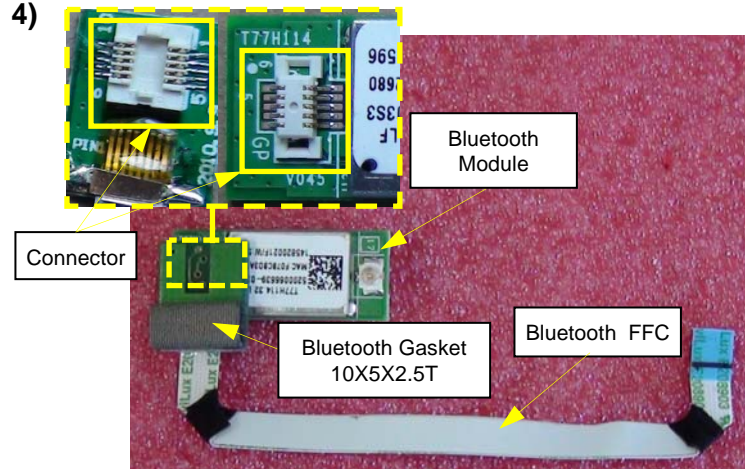
3)



Remove Bluetooth Module.

Note the double adhesive tape is attached on the backside of it.

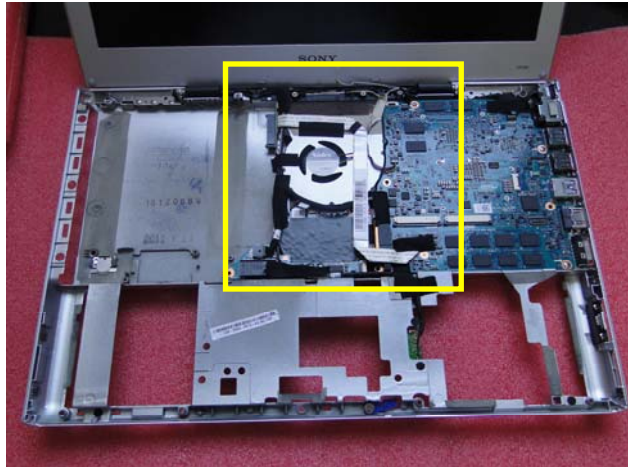
4)



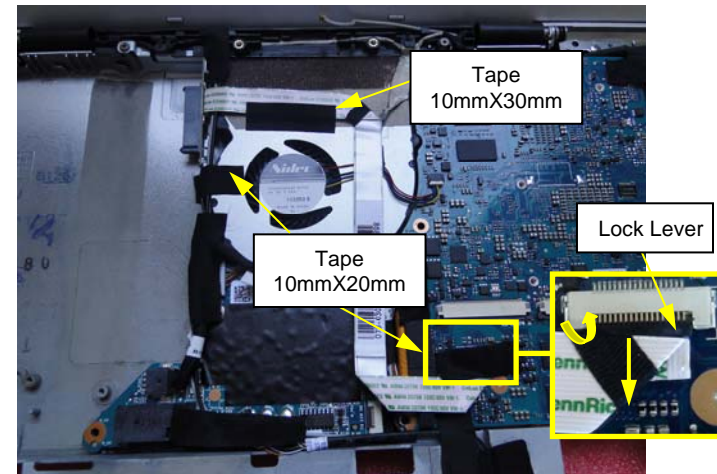
Disconnect Bluetooth FFC from Bluetooth Module.

ODD FFC

1)

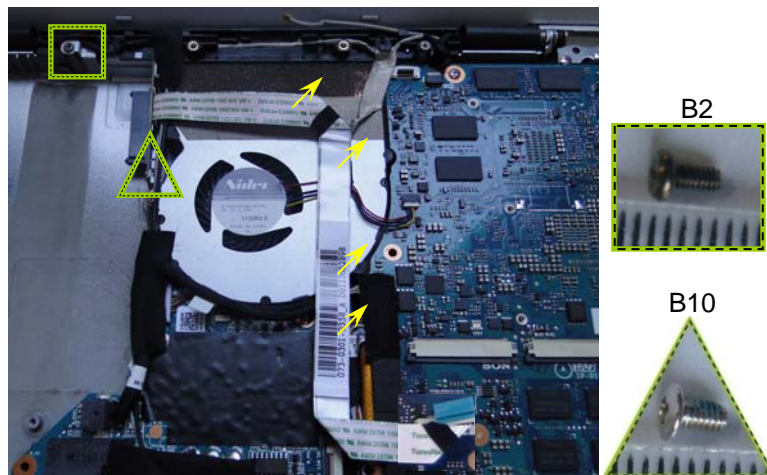


2)



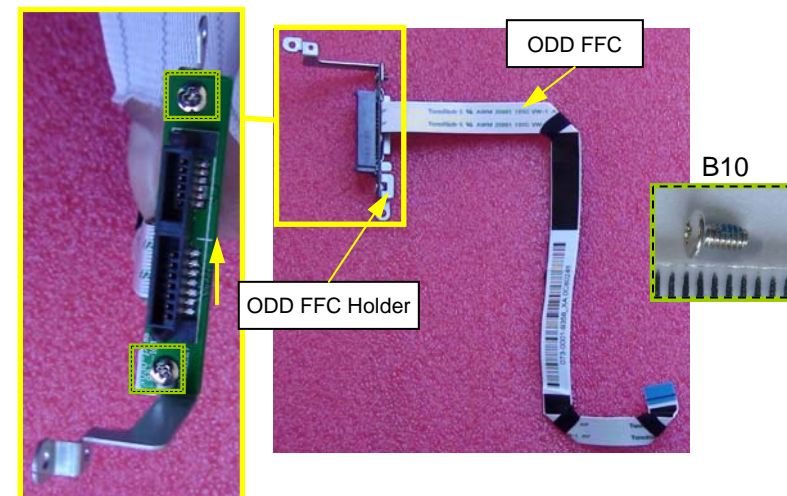
Peel off three Tapes.
Raise the lock lever as the arrow, then disconnect ODD FFC.

3)



Remove two screws of different kinds. Lift up ODD FFC Holder. Note ODD FFC is fixed thermal Module by double tape.

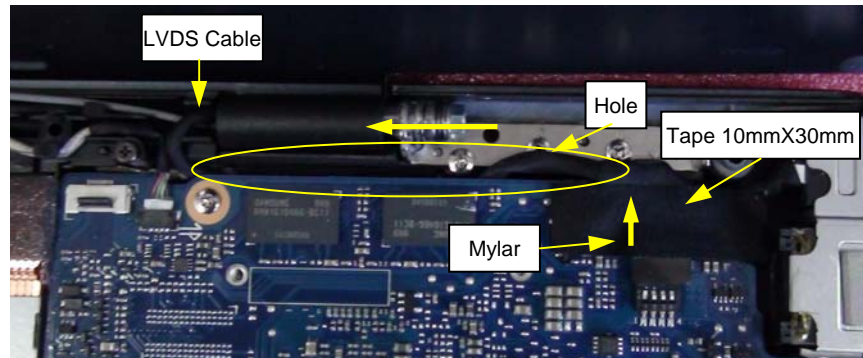
4)



Remove two screws. Lift up ODD FFC.

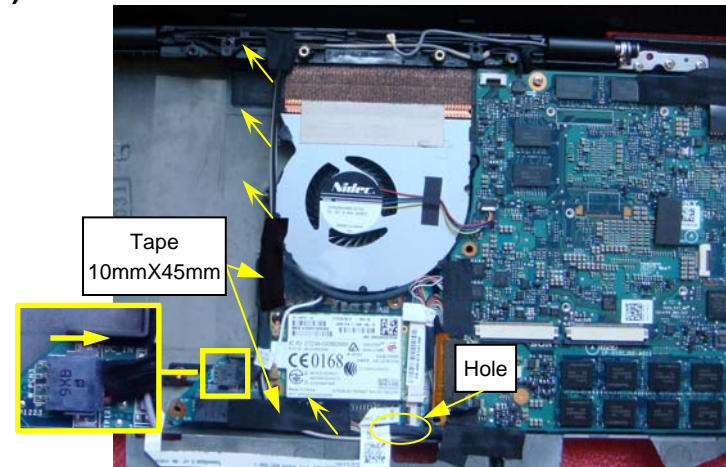
LCD Section (1)

1)



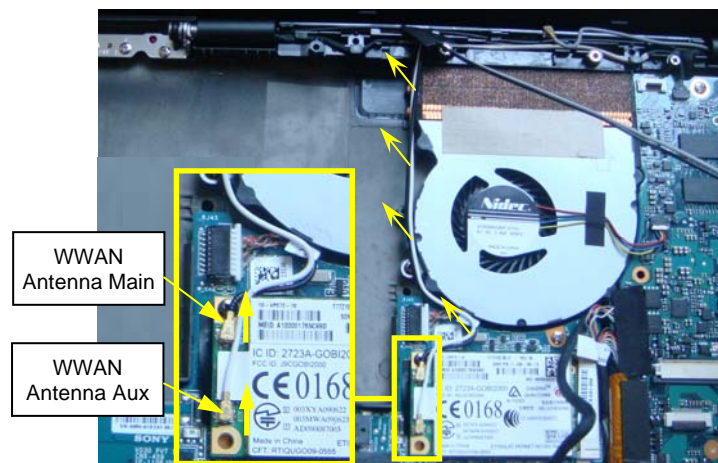
Peel off the Tape. Lift up LVDS Cable vertically with Mylar.
Pull out the LVDS Cable from the Hole.

2)



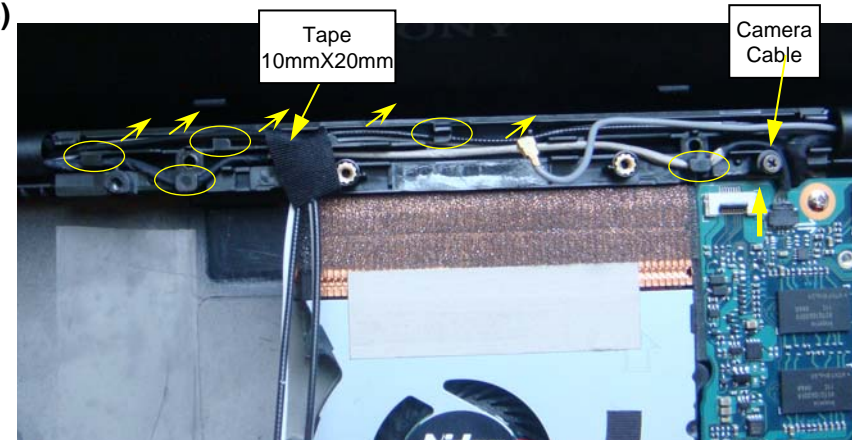
Peel off three Tapes. Disconnect DC In Cable horizontally.
Pull out the WLAN Antenna from the Hole. Note the Antennas' route.

3)



Pull out the WWAN Antenna from WWAN Card vertically.
Note the Cables' route.

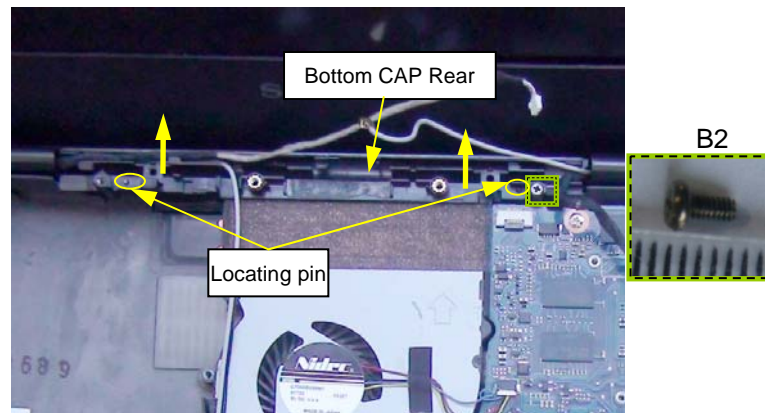
4)



Peel off one Tape. Disconnect Camera Cable horizontally.
Remove the cables from Rear cap. Note the cables' route.

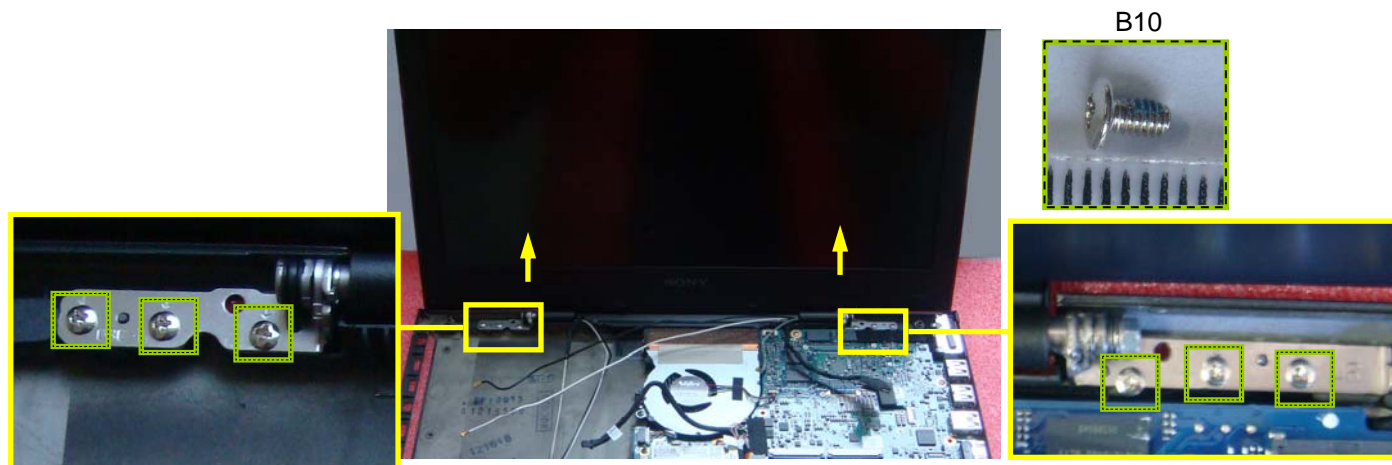
LCD Section (2)

5)



Remove one screw. Remove Bottom CAP Rear. Note two Locating pins.

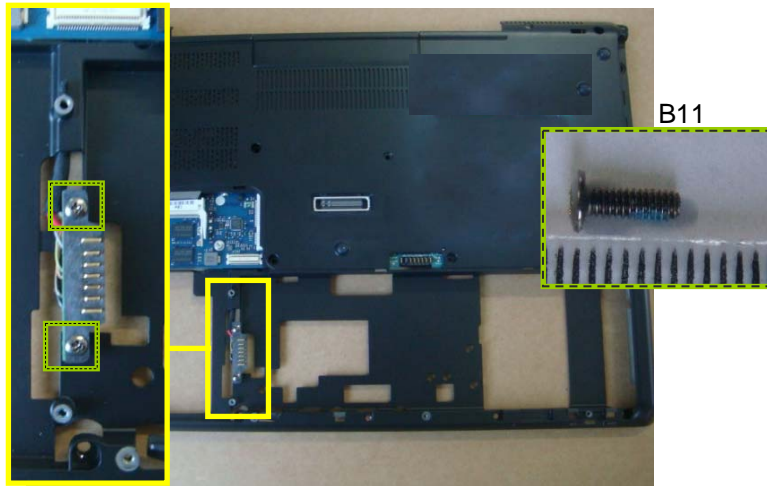
6)



Holding the LCD Unit, remove six screws.
Remove LCD Module from Bottom with two hands.

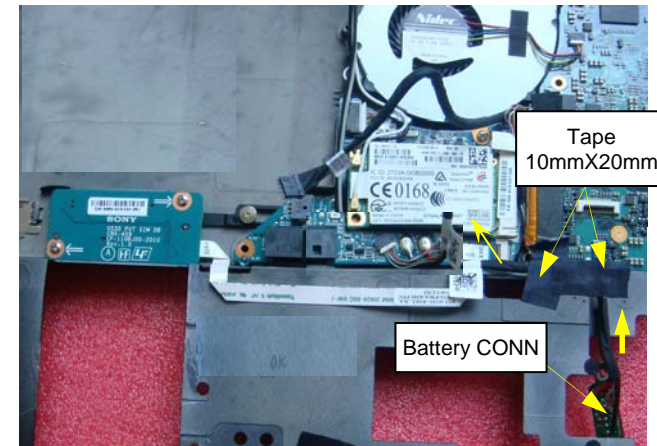
SIM Card (1)

1)



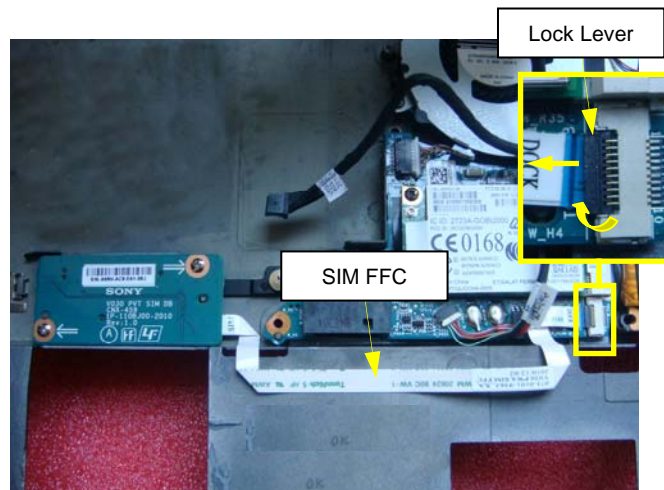
Turn the Bottom over. Remove two screws.

2)



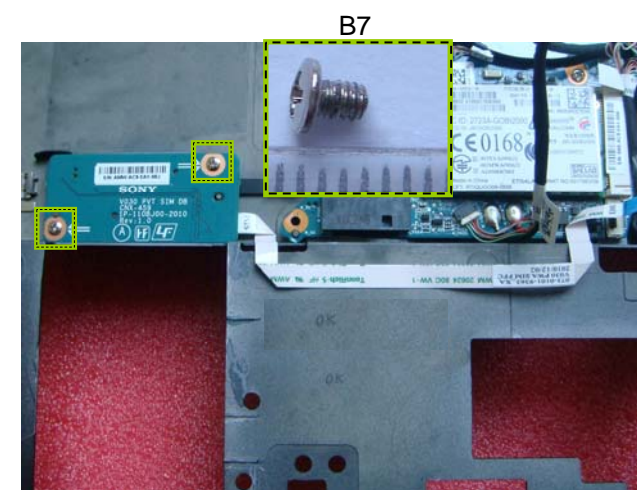
Turn the unit over. Peel off two Tapes. Pull out the Battery CONN.

3)



Raise the Lock Lever as the arrow and disconnect SIM FFC from Docking Daughter Board.

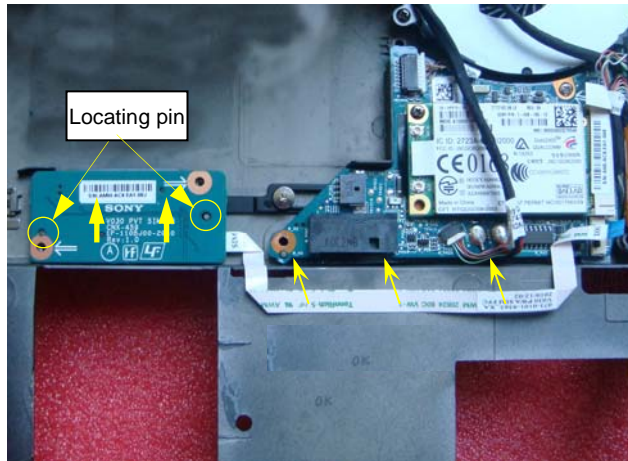
4)



Remove two screws.

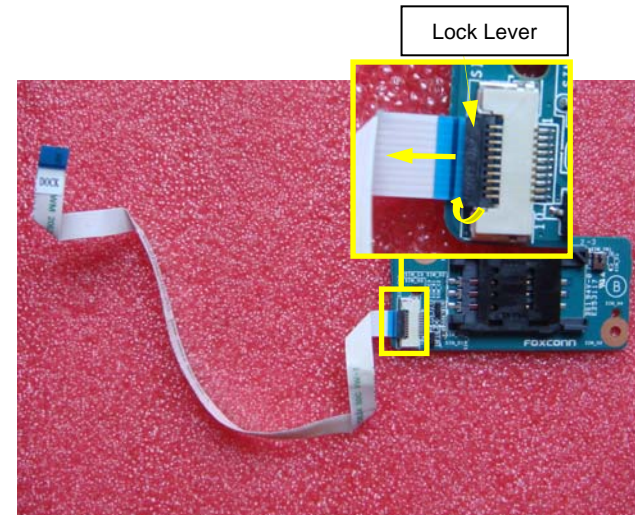
SIM Card (2)

5)



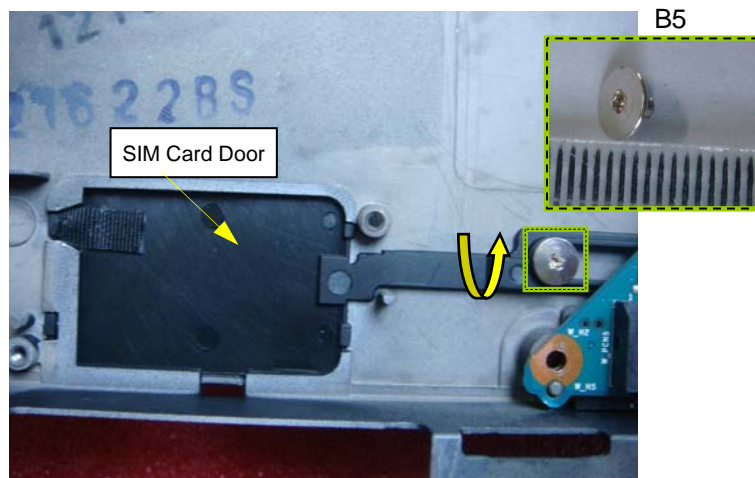
Remove the SIM Card. Note Audio Board FFC is fixed to Bottom with double tape.

6)

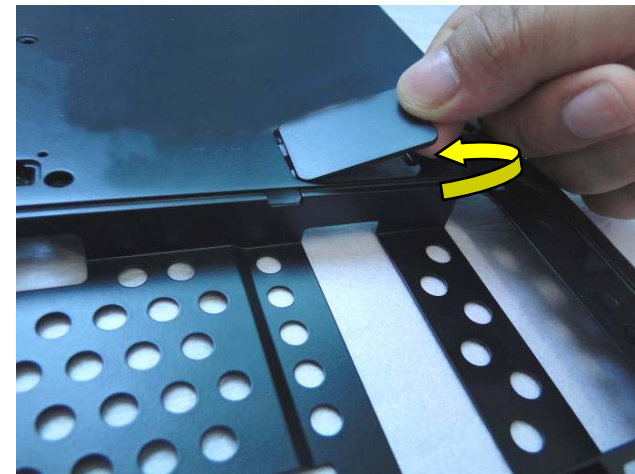


Raise the Lock Lever as the arrow and disconnect SIM FFC from SIM Card.

7)



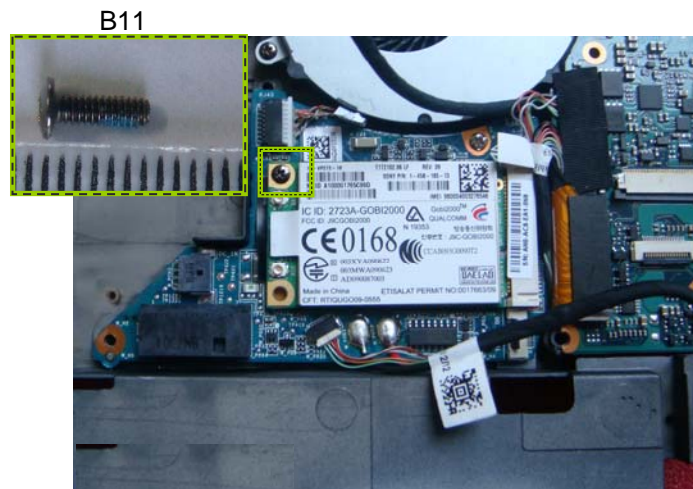
Remove one screw.



Turn over Bottom, remove SIM Card Door as picture shown. **36**

WWAN Card

1)



Remove one screw.

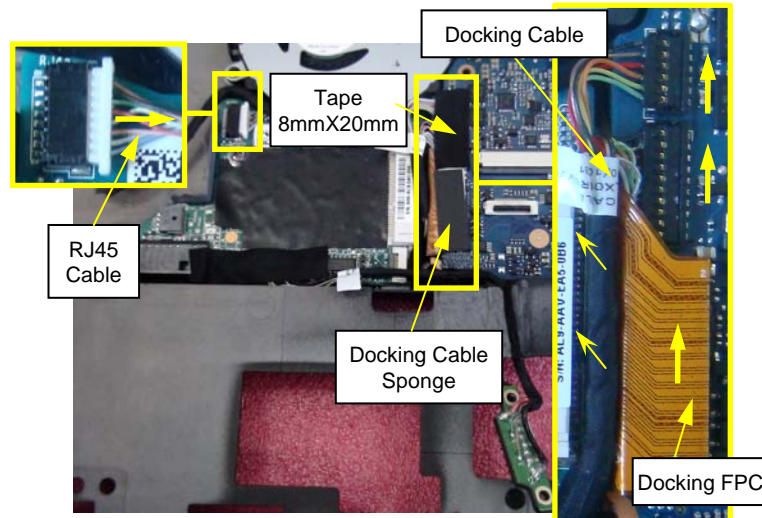
2)



Remove WWAN Card.

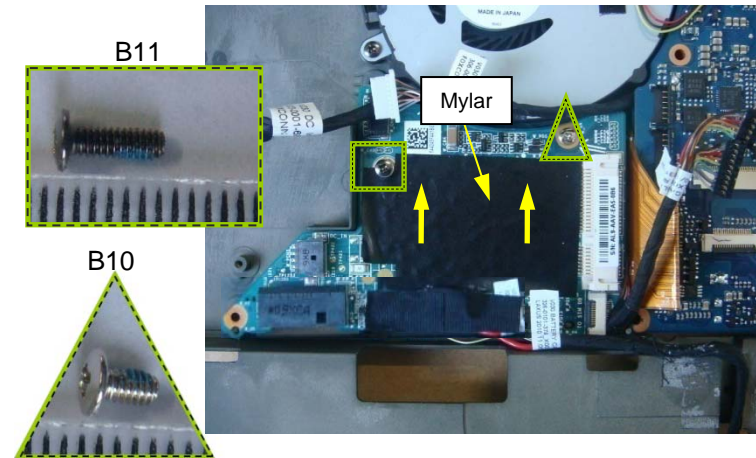
Docking Daughter Board

1)



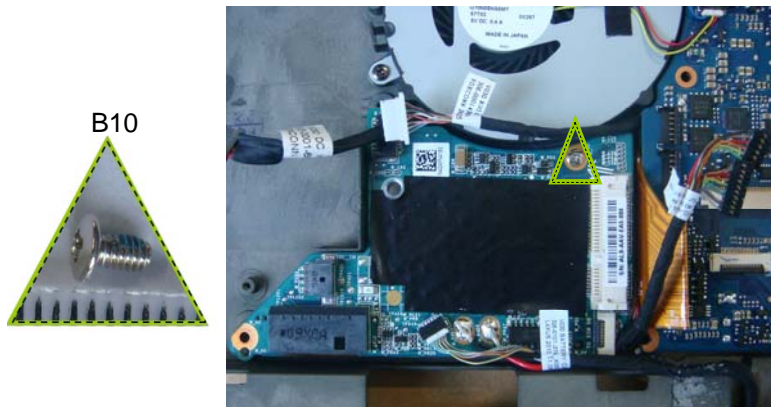
Peel off one Tapes and disconnect Docking FPC, Docking FFC and RJ45 Cable.

2) Without WWAN Card



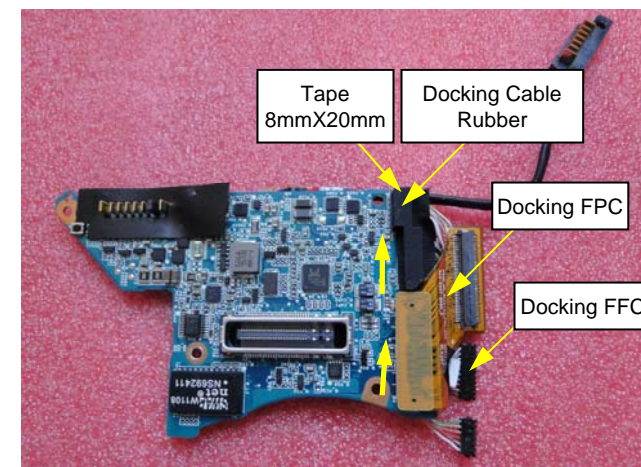
Remove two kinds of screws and lift up Docking Daughter Board.

3) With WWAN Card



Remove one screws and lift up Docking Daughter Board.

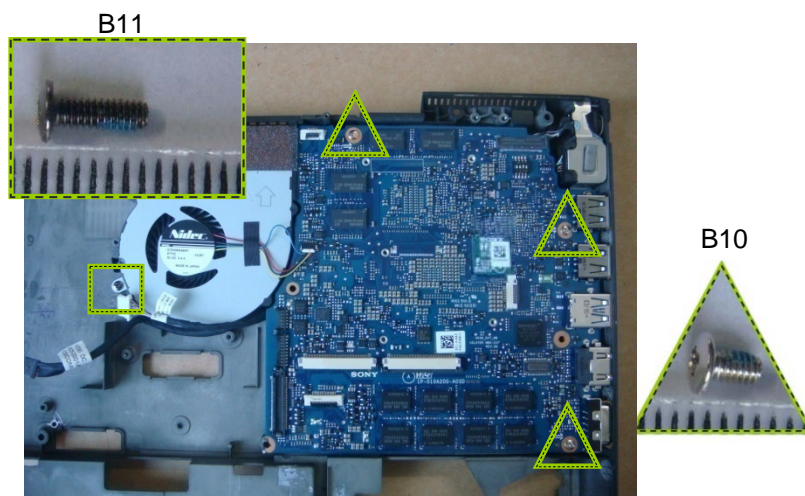
4)



Disconnect Docking FPC.
Remove the Docking Cable Rubber. Peel off one Tape.
Then disconnect Docking FFC from Docking Daughter Board.

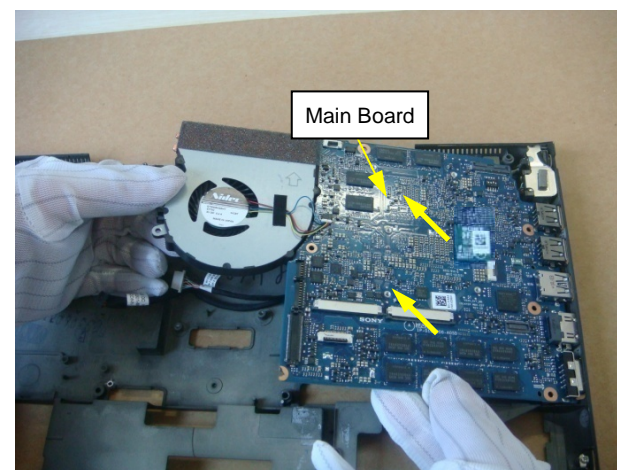
Main Board

1)



Remove four screws. Note there are two different kinds of screws.

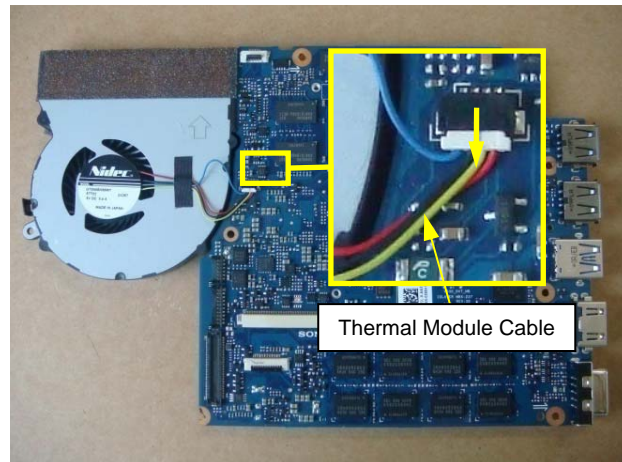
2)



Lift up Main Board from Bottom as picture show.

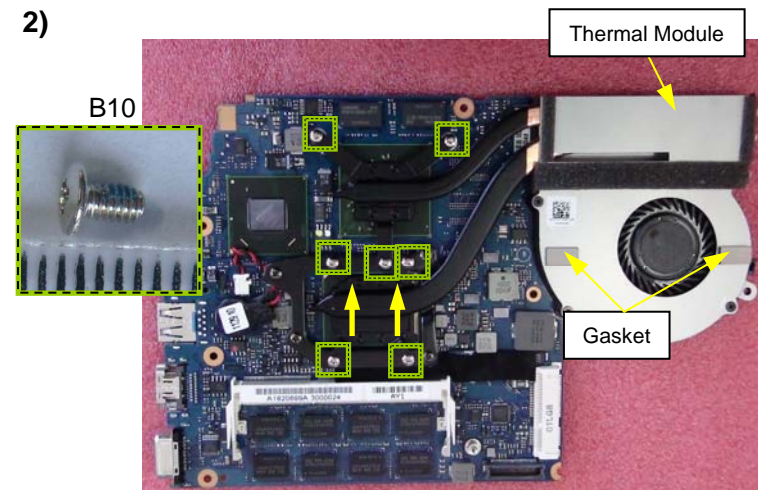
Thermal Module, Thermal Plate

1)



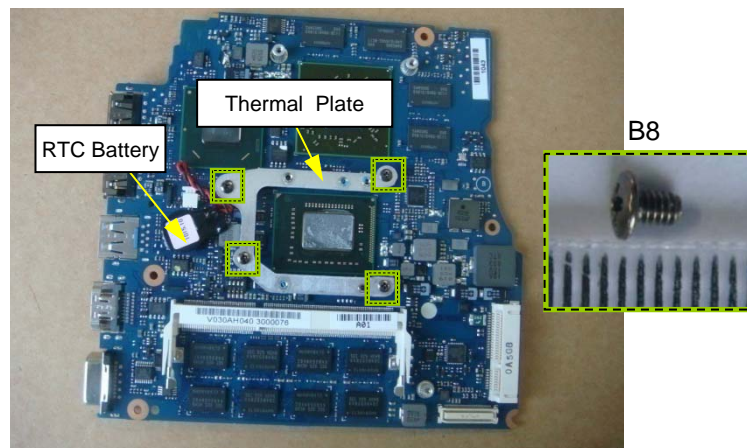
Disconnect Thermal Module Cable horizontally from Main Board.

2)



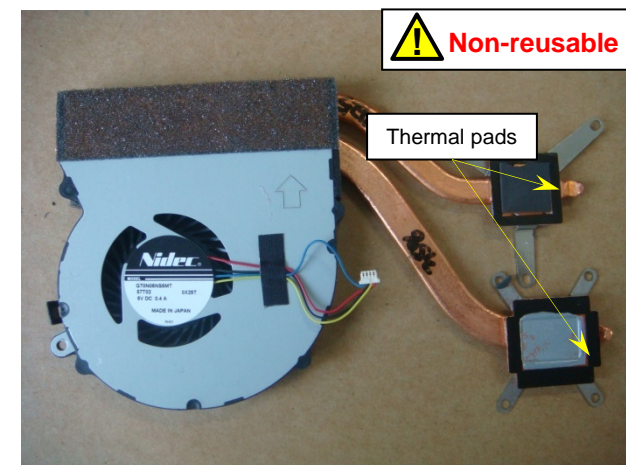
Turn the unit over. Remove seven screws and lift up Thermal Module. Note the position of the Gasket.

3)



Remove four screws and then remove Thermal Plate.

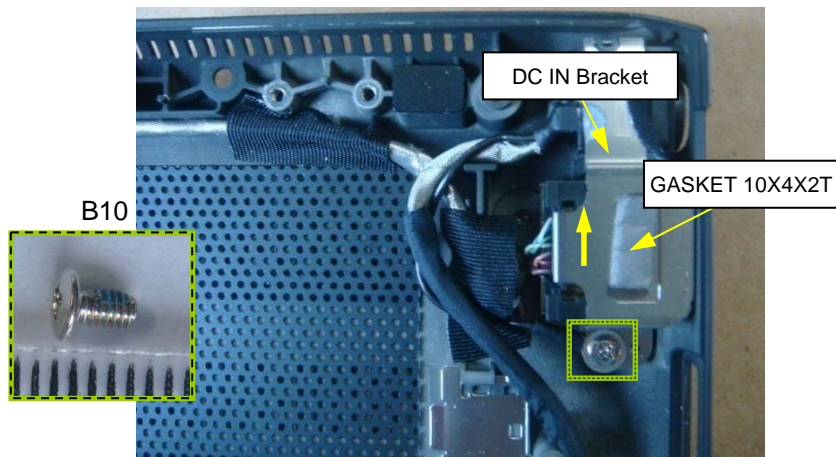
4)



The Thermal pads are attached on the bottom of the Thermal Module. **40**

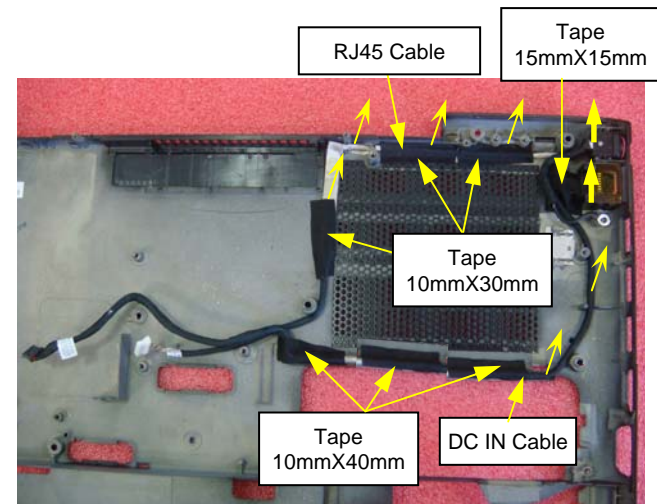
DC IN Cable, RJ45 Cable

1)



Remove one screw and lift up DC IN Bracket. Remove the gasket.

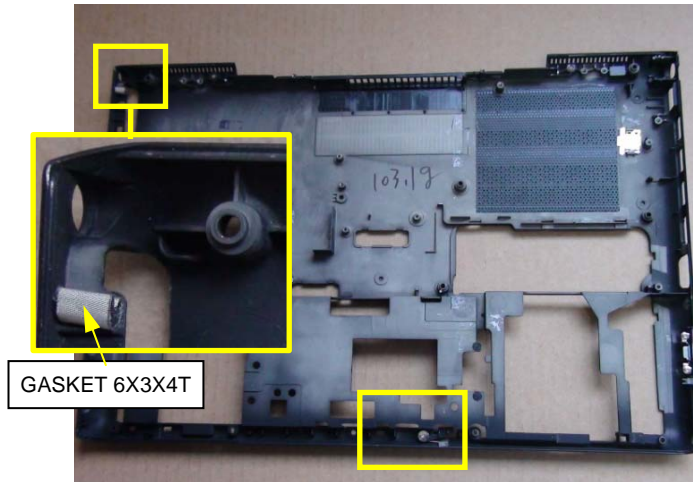
2)



Peel off seven Tapes. Remove DC IN Cable and RJ45 Cable.
Note the cables' route.

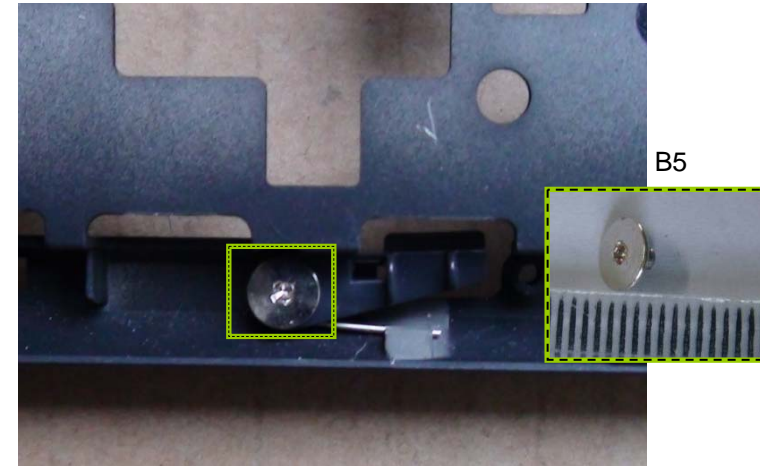
Battery Latch

1)



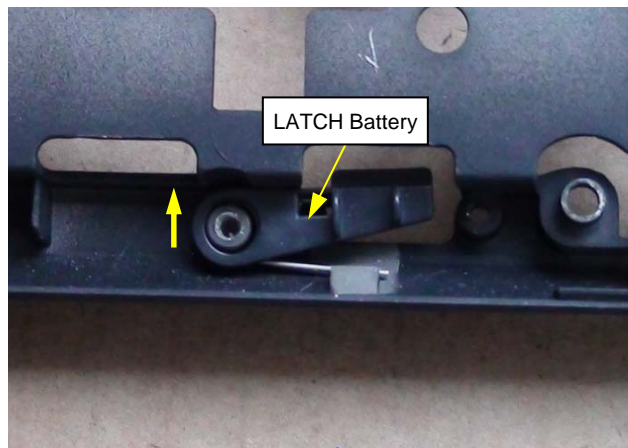
Note the position of GASKET 6X3X4T.

2)



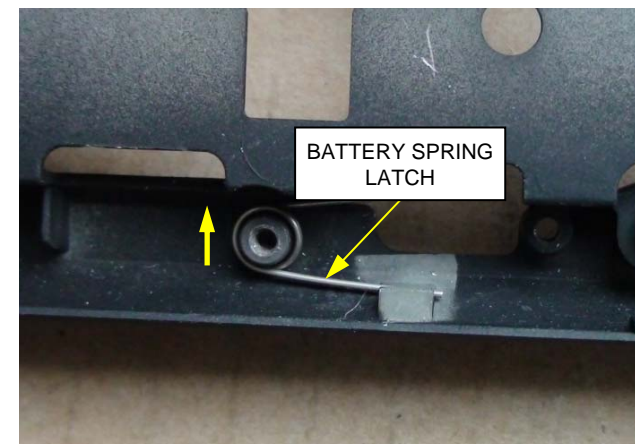
Remove one screw.

3)



Remove LATCH Battery.

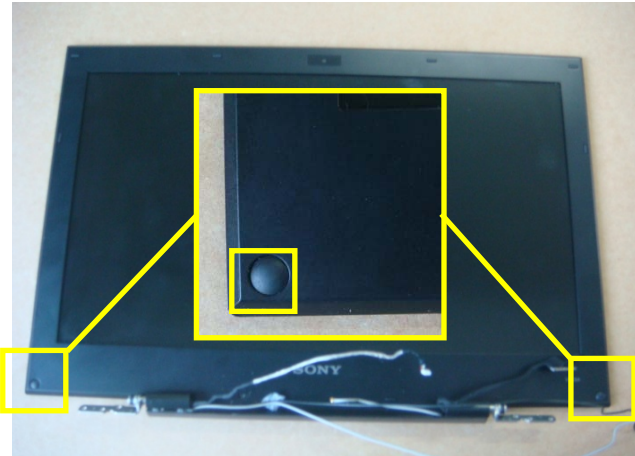
4)



Remove BATTERY SPRING LATCH.

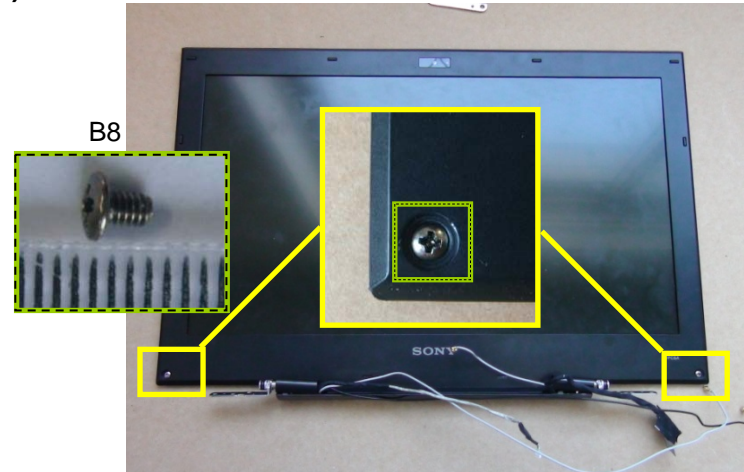
LCD Bezel (1)

1)



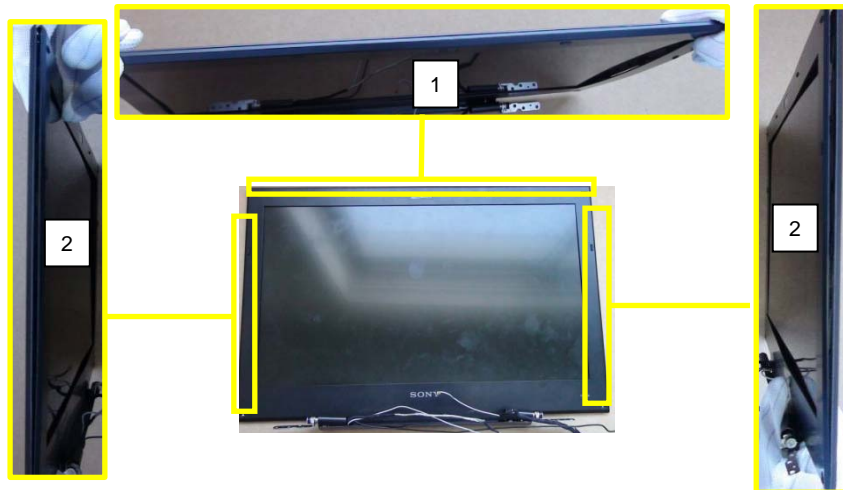
Remove two LCD rubber round.

2)



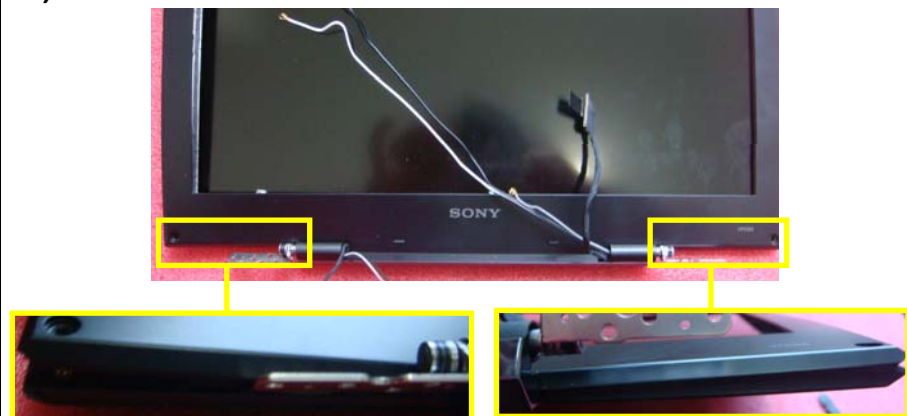
Remove two screws.

3)



Release the clips of LCD Bezel gently from the outside edges as picture shown.

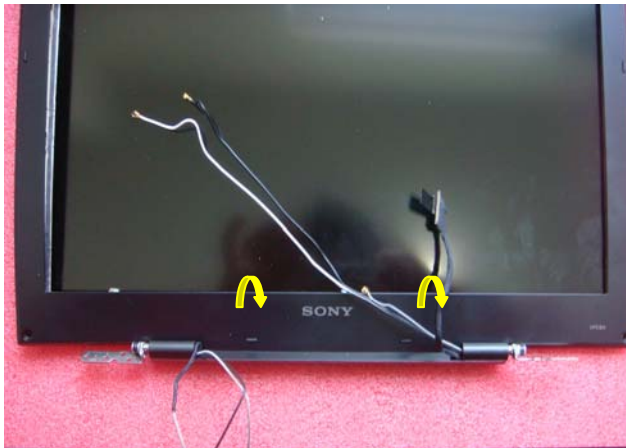
4)



Release the clips of LCD Bezel blow side gently from the outside edges as picture shown.

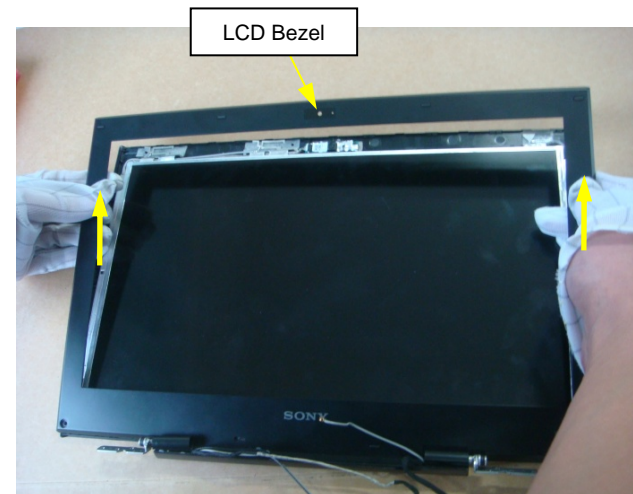
LCD Bezel (2)

5)



Release the clips of LCD Bezel bottom side gently from the inside edges.
Note the LCD Bezel bottom side fixed to LCD Panel double tapes.

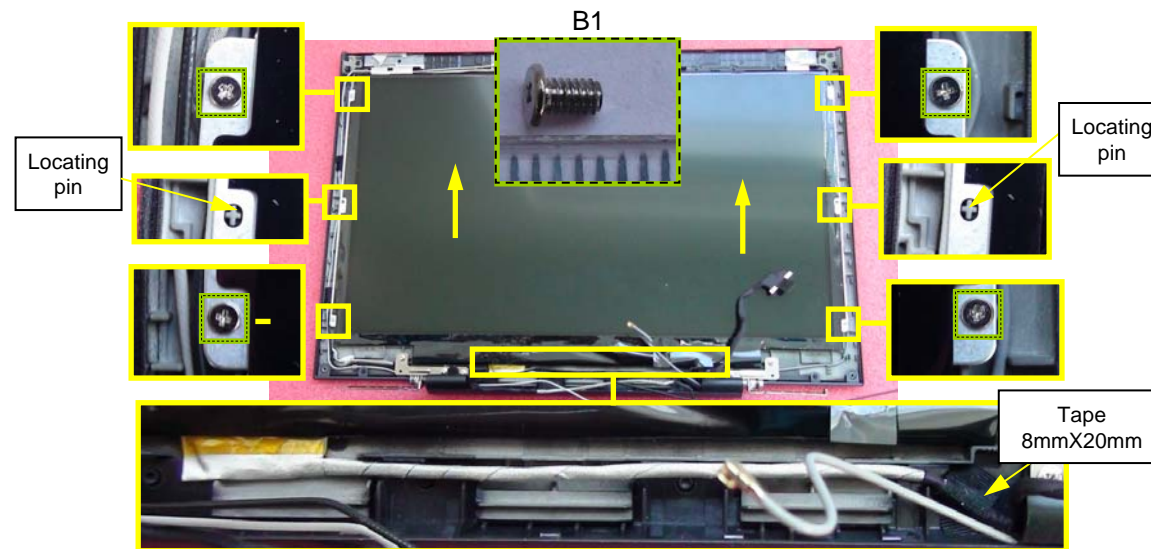
6)



Remove LCD Bezel carefully with two hands.

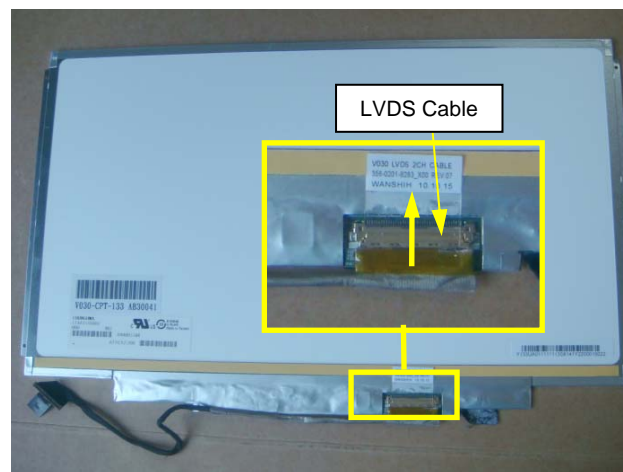
LCD Panel

1)



Remove four screws. Peel off one tape. Take up the LCD Panel with two hands. Note the LVDS Cable's route and the Locating pins.

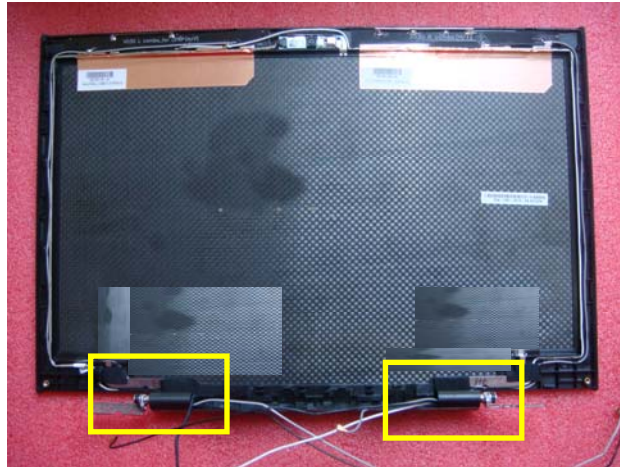
2)



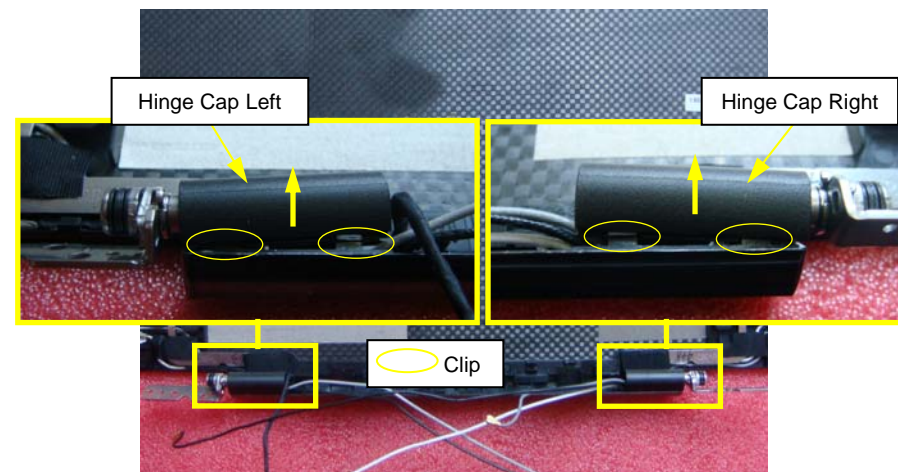
Turn the LCD Panel over. Disconnect LVDS Cable horizontally from LCD Panel.

Hinge Cap

1)



2)



Remove the Hinge Cap Right and Hinge Cap Left. Note four clips.

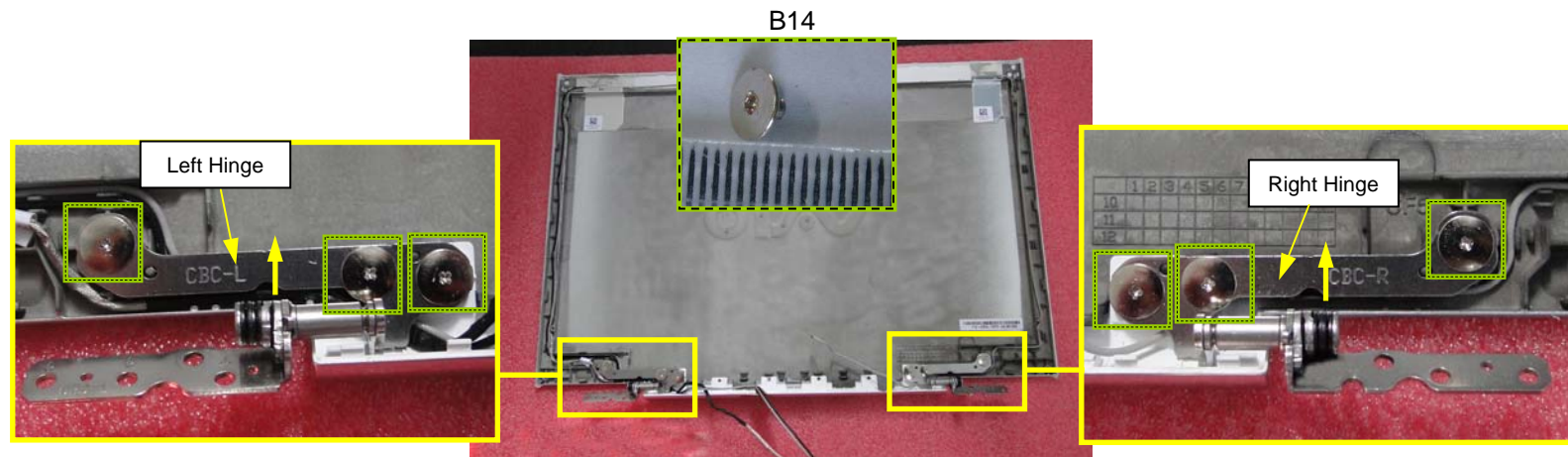
Hinge (For Hot)

1)



Peel off five Tapes.

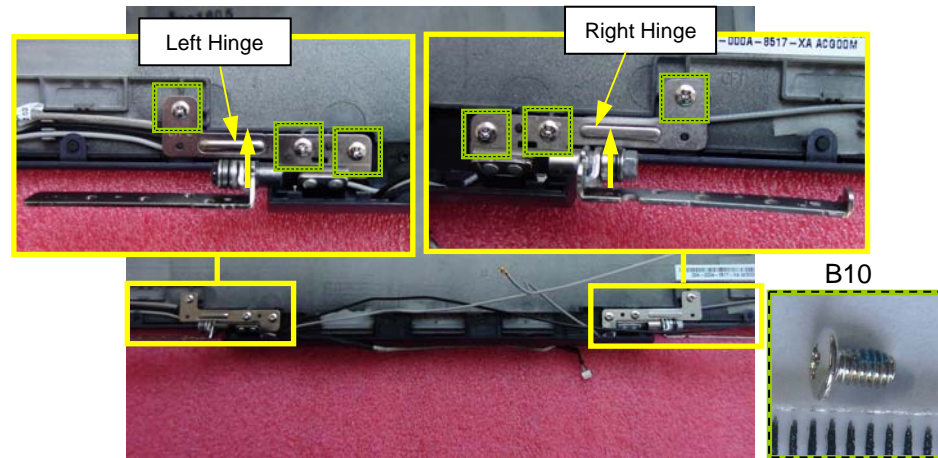
2)



Remove six screws. Lift up Right Hinge and Left Hinge.

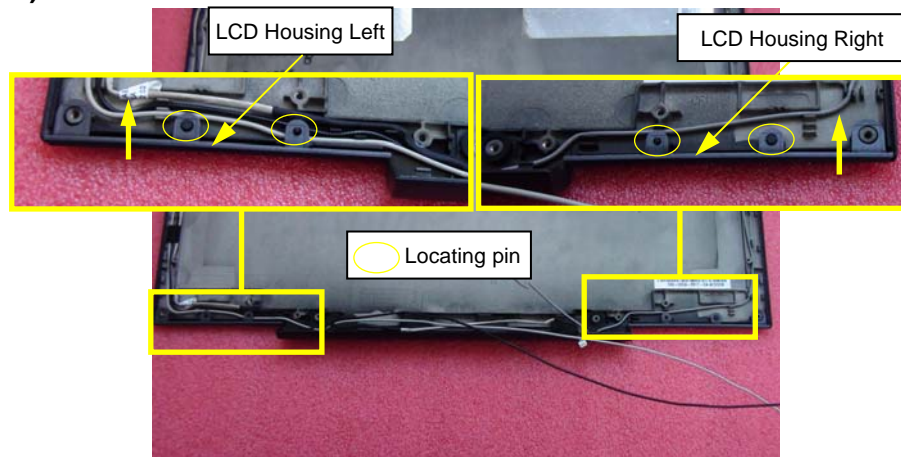
Hinge (For Mild)

1)



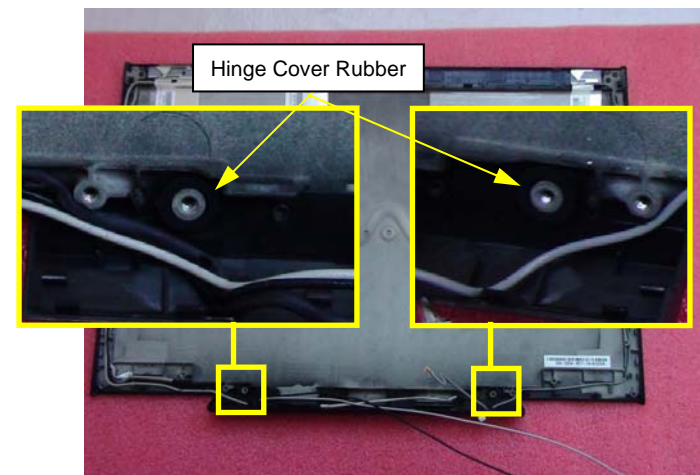
Remove six screws. Lift up Right Hinge and Left Hinge.

2)



Lift up LCD Housing Left and LCD Housing Right. Note the Locating pins.

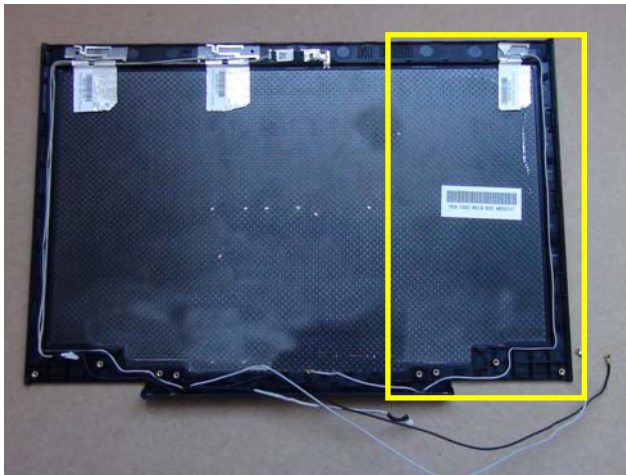
3)



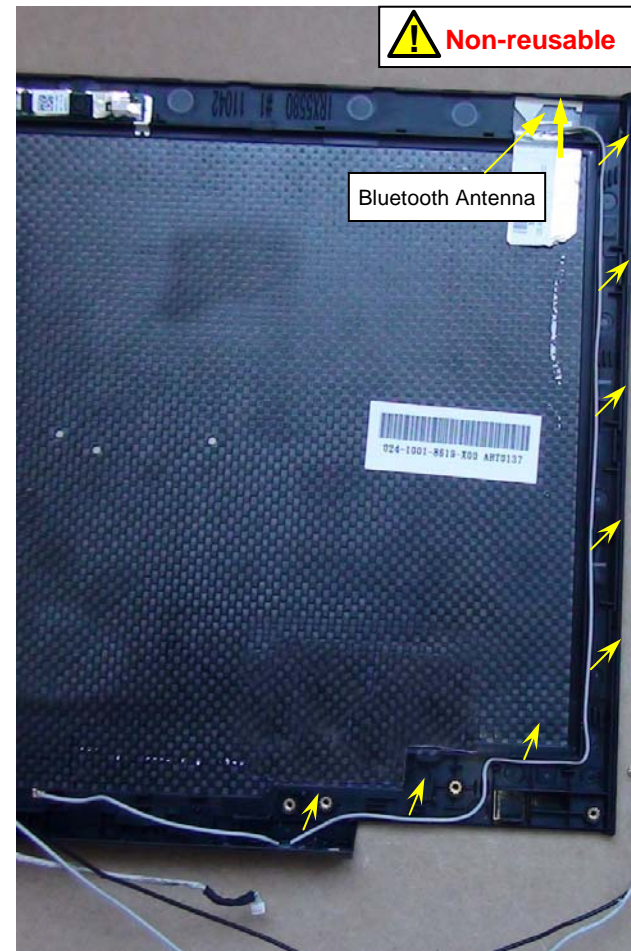
Remove the Hinge cover Rubbers.

Bluetooth Antenna (Without WWAN Card)

1)



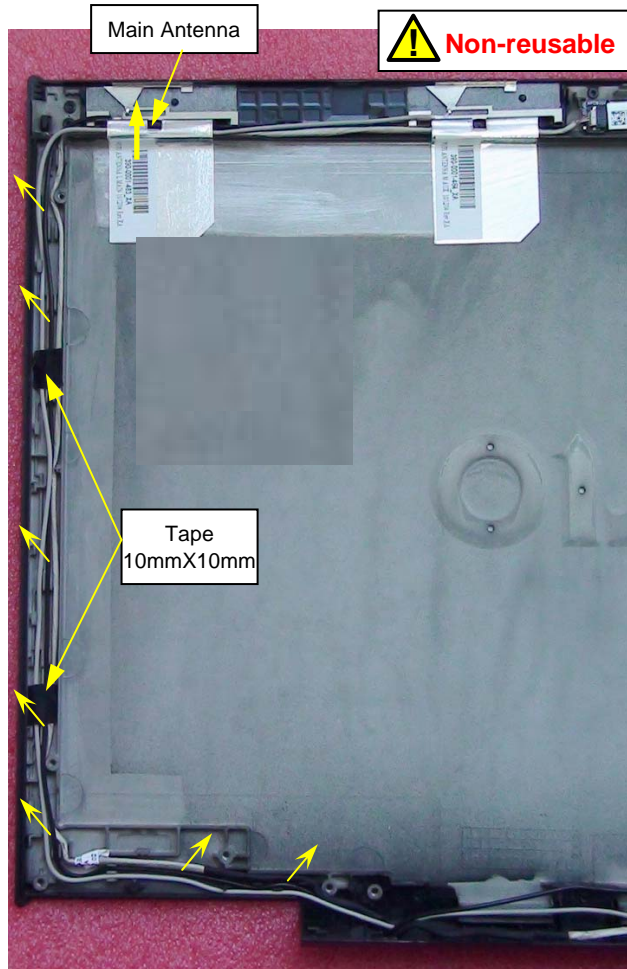
2)



Peel off the Bluetooth Antenna from display housing and then remove the Bluetooth Antenna. Note the Antenna's route.

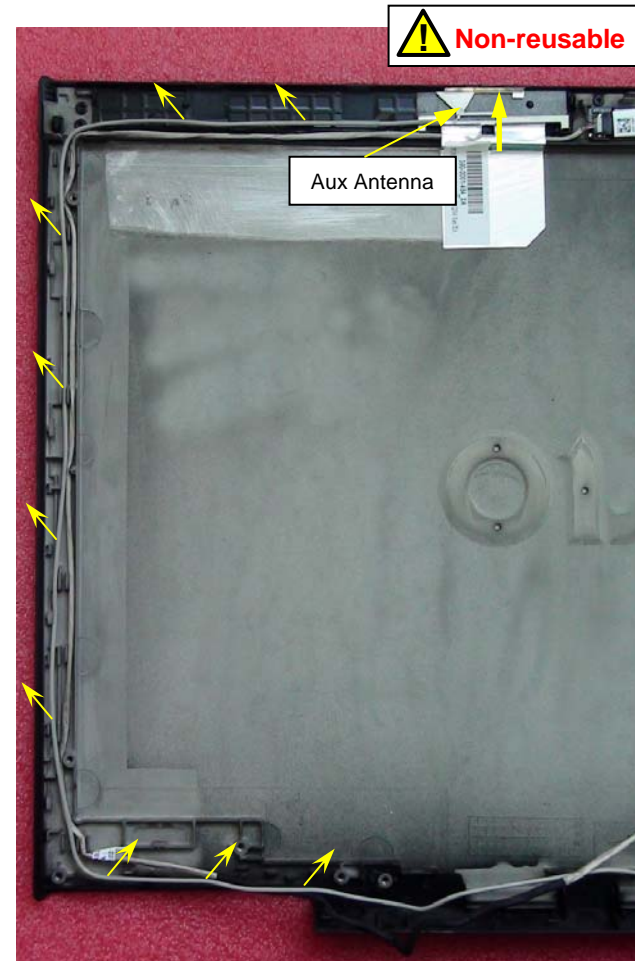
WLAN Main Antenna, WLAN Aux Antenna (Without WWAN Card)

1)



Peel off two Tape. Peel off the Main Antenna from display housing and then remove the Main Antenna. Note the Antenna's route.

2)



Peel off the Aux Antenna from display housing and then remove the Aux Antenna. Note the Antenna's route.

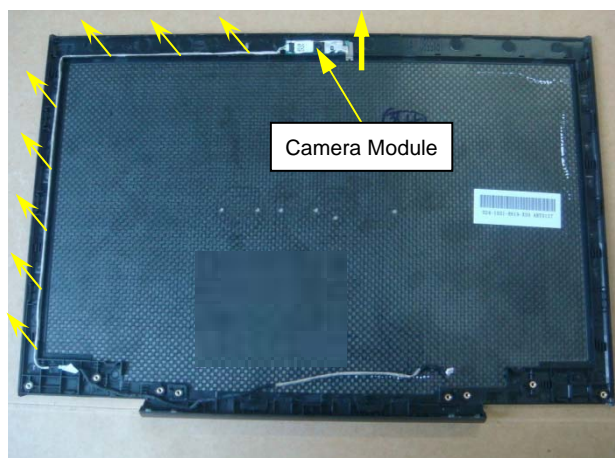
Combo Antenna Right , Combo Antenna Left (With WWAN Card)



Peel off Combo Antenna Right and Combo Antenna Left. Note the antennas' route.

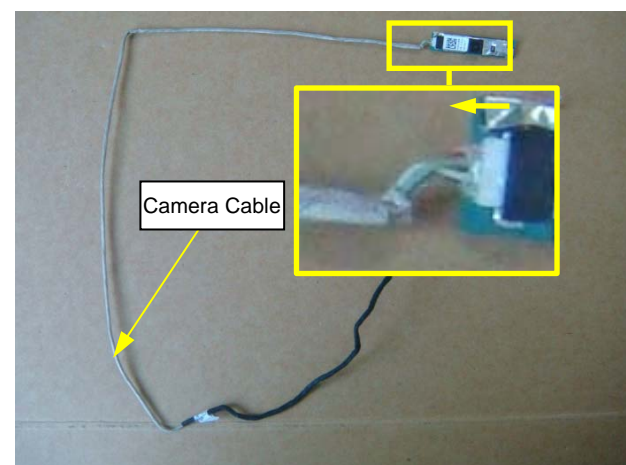
Camera Module

1)



Remove the Camera Module. Note the Camera Cable's route.

2)



Disconnect Camera Cable from Camera Module horizontally.

Hinge Cover

1)

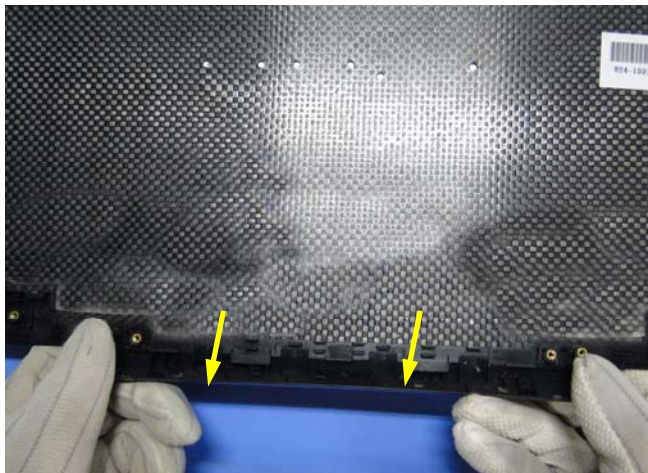


2)



Release the clips from two side carefully.

3)



Remove Hinge Cover from display housing as picture show.

Update History

[ADD]---Addition [DEL]---Deletion [CHG]---Change [COR]---Correction [MA]---Model addition

Date	Contents	Version No.
2011.03.12	First Edition	1.00
2011.06.01	[ADD][CHG] Page1,Page7,Page8,Page13,Page15,Page16,Page28,Page29,Page30,Page31,Page32, Page37,pag46	2.00
2011.07.01	[ADD] Page19	2.01
2011.09.01	[ADD][CHG] Page2,Page5,Page36,Page41,Page53	2.02